

Procedure to Flash Upgrade the TLink TL250/TL300

The following is a step-by-step guide to upgrade the software of a TL250 or TL300 IP communicator module.

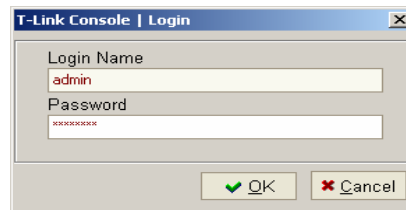
Step 1 – Run the T-Link Console Software

If you have not already installed the **T-Link Console** software, the software can be downloaded from the DSC website at www.dsc.com.

Once the software has been installed, double-click on the icon (shown below) found on the desktop to run the software.

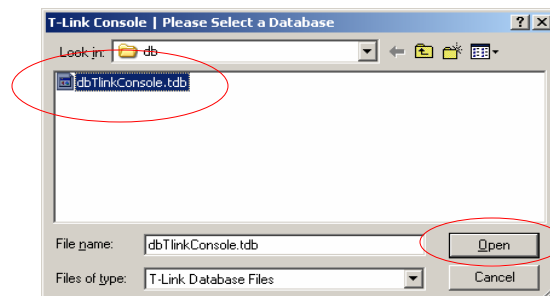


Step 2 – T-Link Console Software Log in



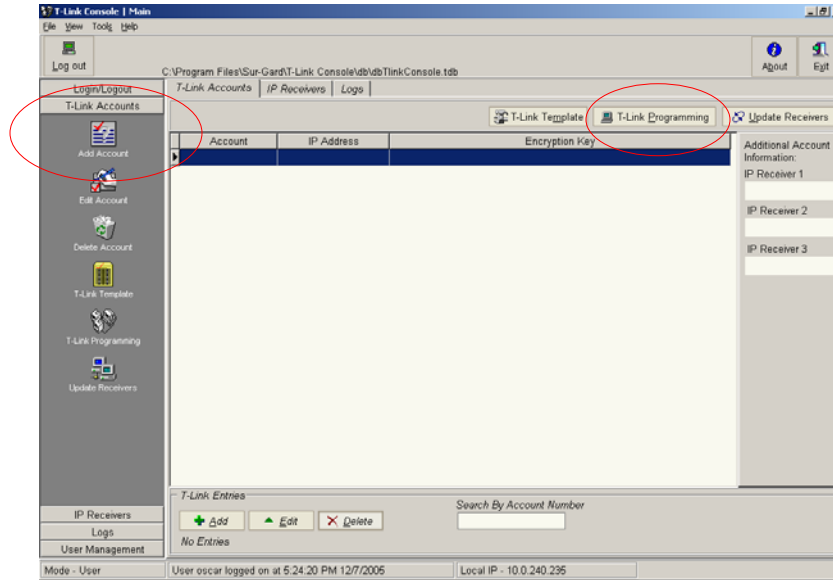
Log in by entering the correct Login Name and Password. At default, *Login Name = admin* and *Password = password*.

Step 3 – Select the Database File



Select the Database you wish to use. At default select **dbTlinkConsole.tdb**, then click on the *Open* button.

Step 4 – Adding a T-Link Account

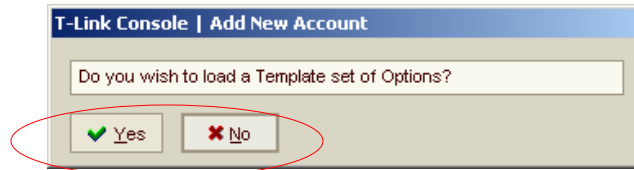


Select **T-Link Accounts** from the left-hand-side column. If the account to be upgraded is already listed, highlight the account, click the **T-Link Programming** button and continue to Step 8 of this document. If the account to be upgraded does not exist, click the **Add Account** button and continue to Step 5 of this document.

Step 5 – Enter T-Link Account Information

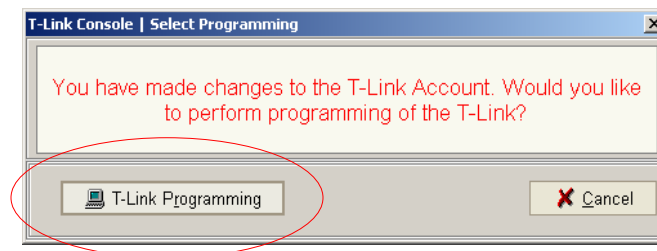
Enter all the applicable information for the T-Link account: Account Number, Version, IP Address, Console Port, Installer Code and Receiver Remote Port. In the Receiver 1 Area enter the IP Address (of the receiver) and the T-Link Gateway. When finished entering all the information, click the Save button.

Step 6 – Select the Template Option



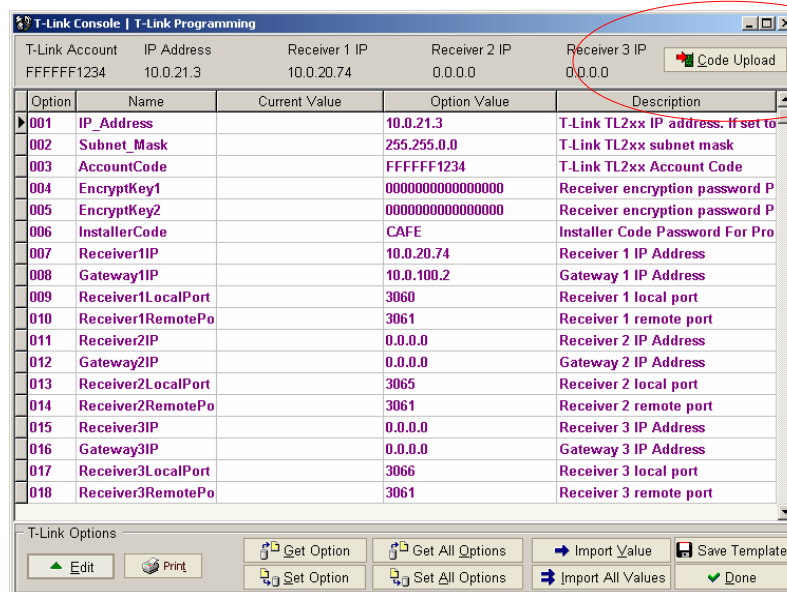
If you wish make the account just created a template, click Yes. If not, click No.

Step 7 – Select the T-Link Programming Option



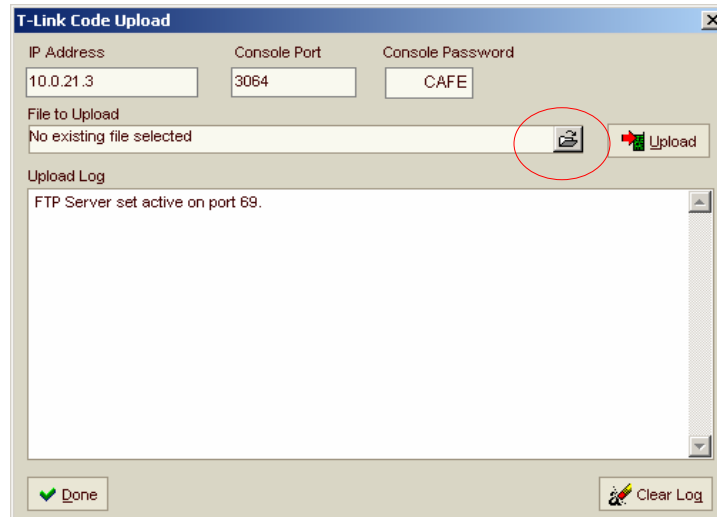
Click on the *T-Link Programming* button to begin programming the T-Link TL250.

Step 8 – Select the Code Upload Option



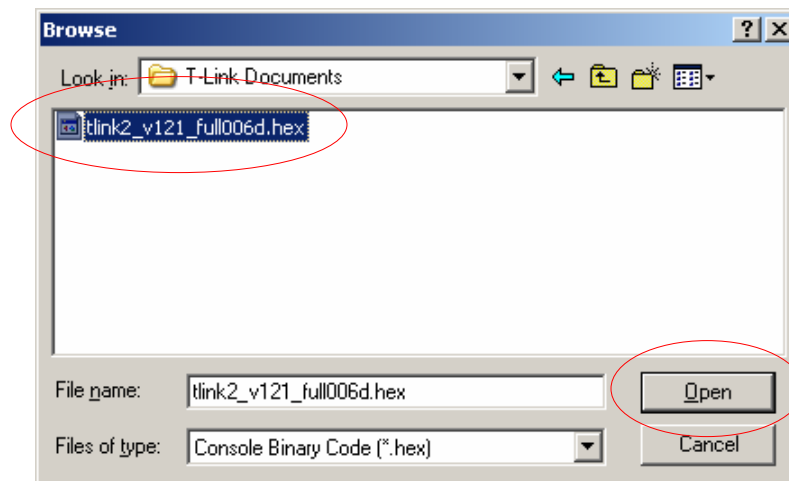
Click on the *Code Upload* button at the top right hand corner of the new window.

Step 9 – Entering T-Link Code Upload Information



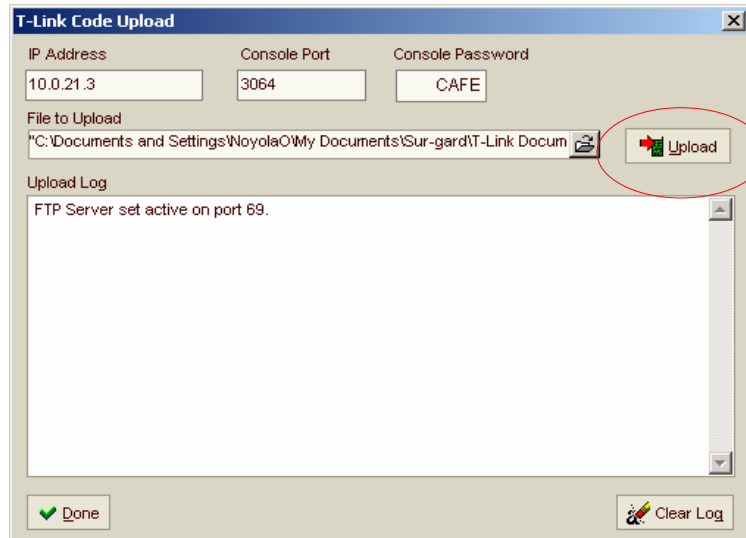
Beside the *File to Upload* text field is the *Browse* icon. Click on the *Browse* icon.

Step 10 – Finding the Upgrade Software File



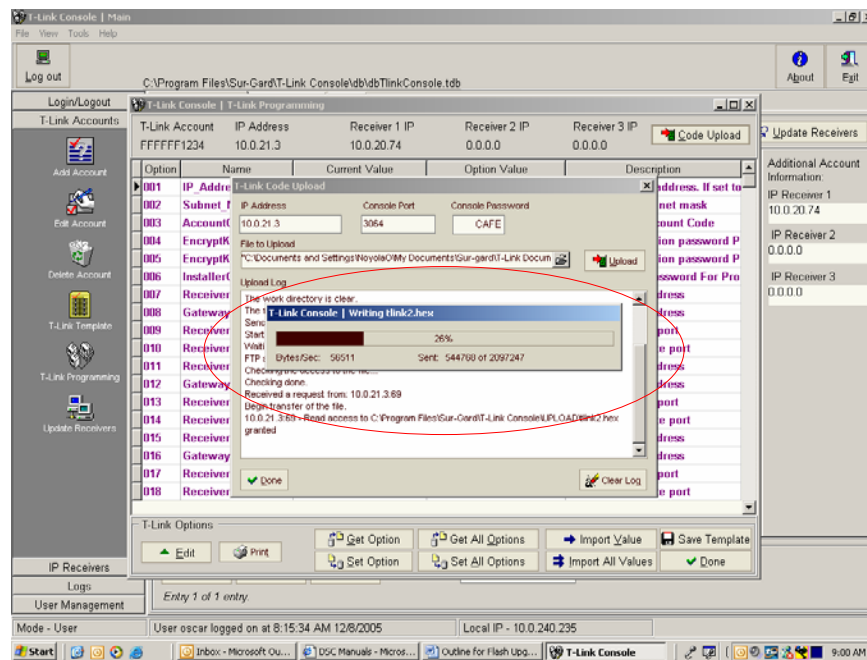
The Browse window will appear. Find the upgrade software file and highlight it (left click on the file so it is highlighted). The file is called **tlink2_v121_full006d.hex**, then click the *Open* button.

Step 11 – Upgrading the TL250/TL300 Software



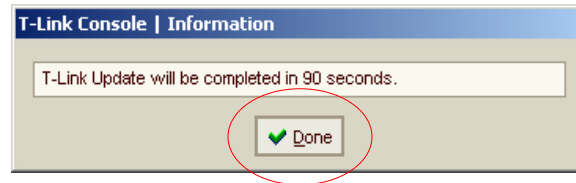
The **T-Link Code Upload** window will appear. Verify all the information is correct, then click the *Upload* button.

Step 12 – Upload Progress Window



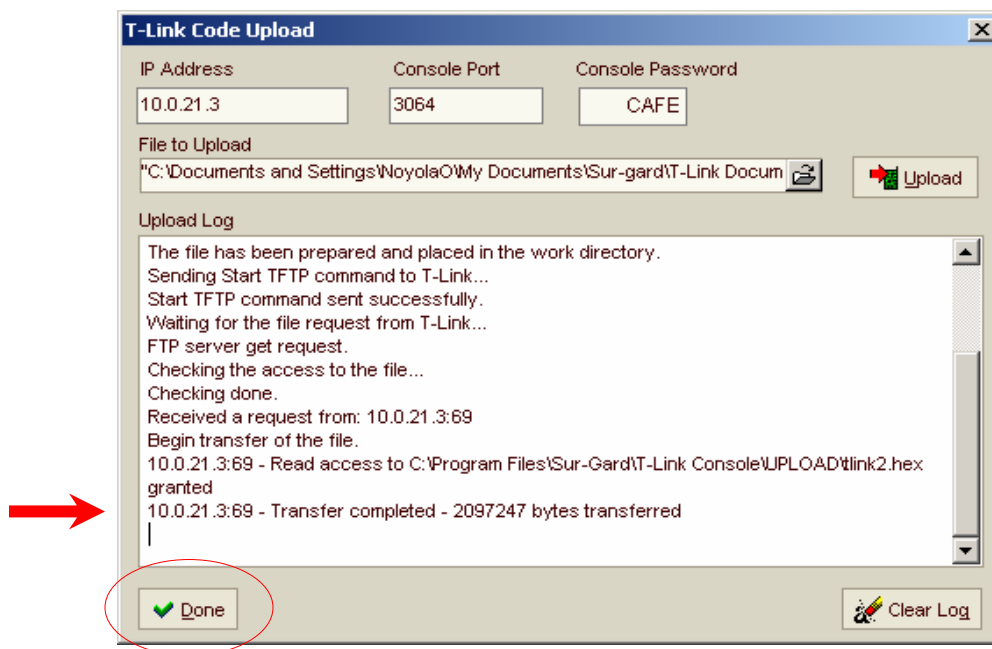
A pop-up window will appear and display the status of the upload. Wait until the bar reaches the end (100% complete).

Step 13 – Upload Complete



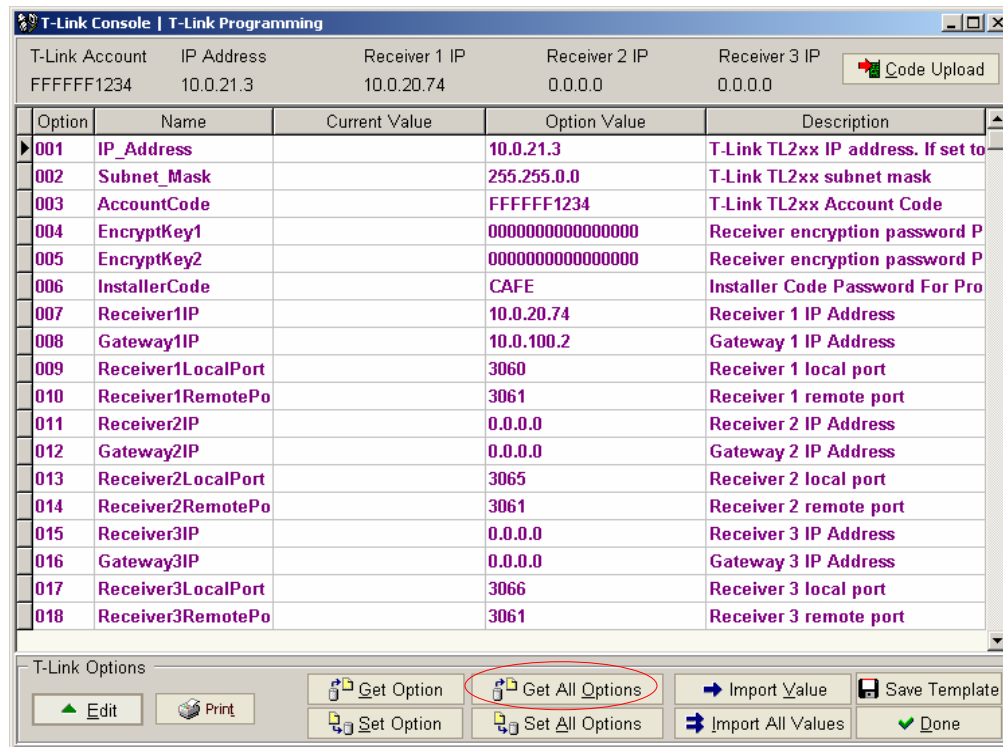
The TL250/TL300 modules take approximately 90 seconds to restart. After the upload is complete, the following box will appear warning you that you must wait 90 seconds before performing any function with the module – DO NOT power the module down. Click the *Done* button.

Step 14 – Closing the Code Upload Window



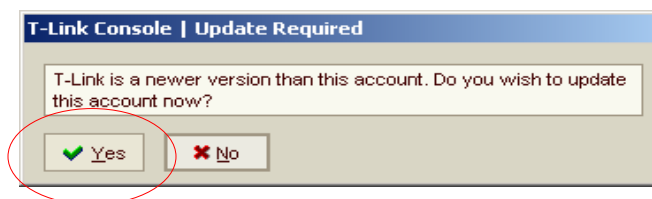
The **T-Link Code Upload** window will confirm the successful upload transfer of the file from the Console software to the TL250/TL300. Click the *Done* button to continue.

Step 15 – Uploading the TL250/TL300 Option Information

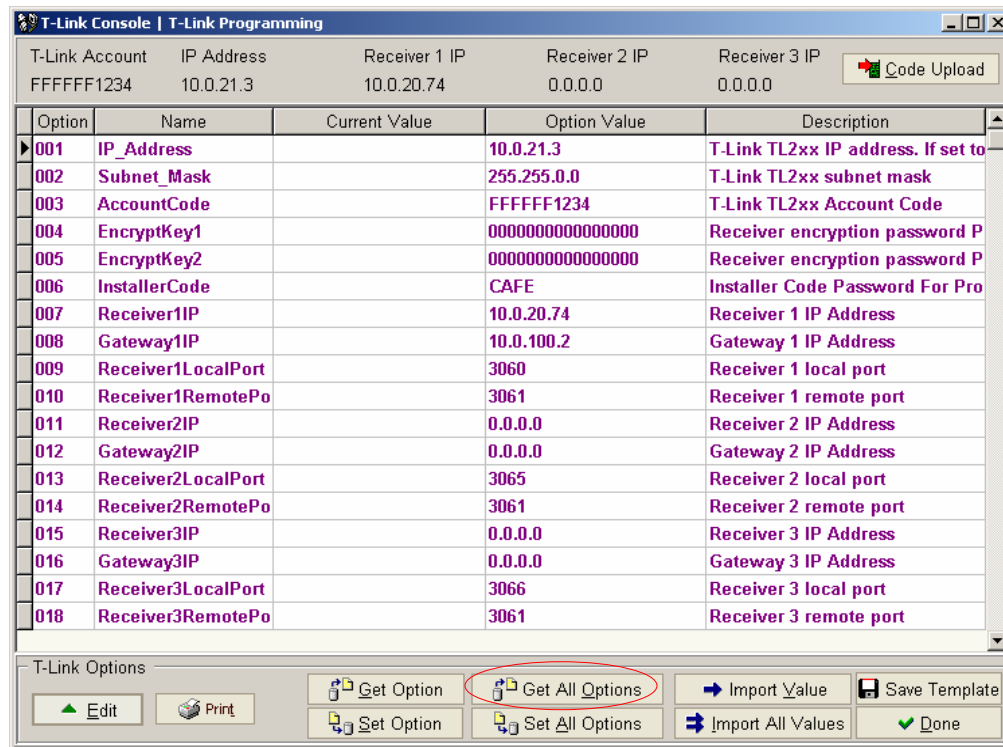


After uploading the new software into the TL250/TL300, all the options of the module must be updated in the Console software. Click the *Get All Options* button.

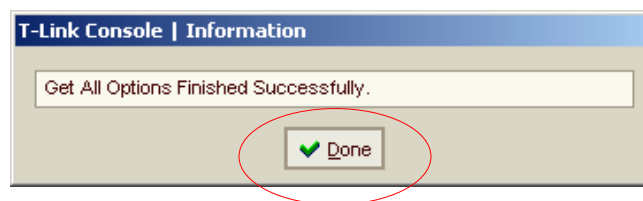
Step 16 – Update Account Question Window



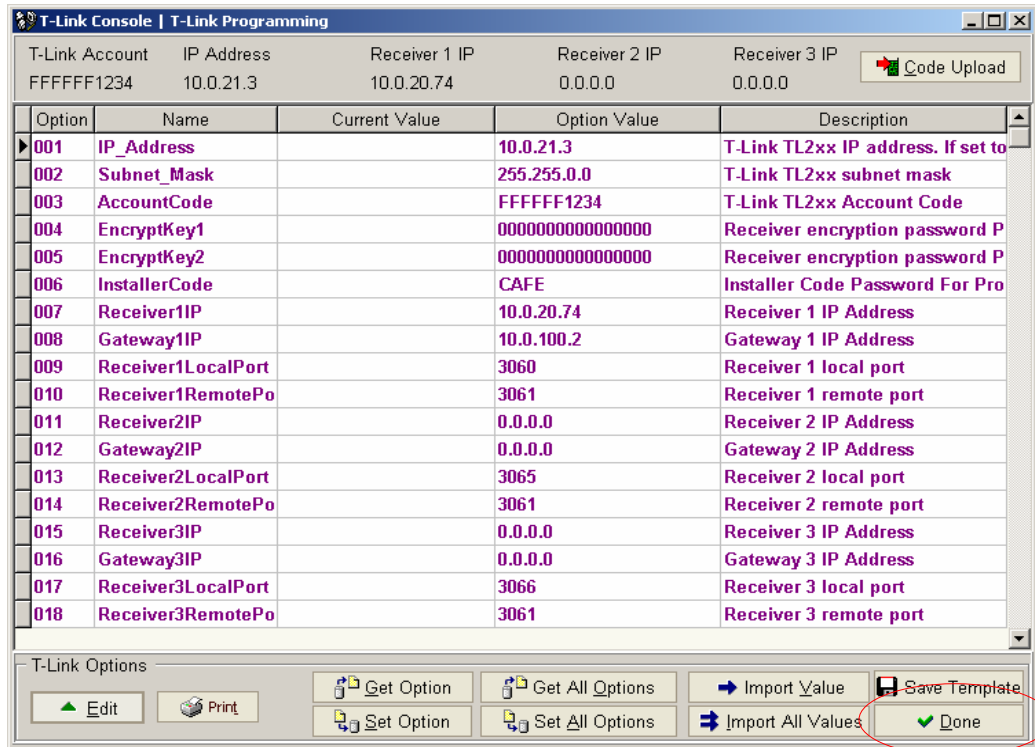
The following window will appear. Click the Yes button.

Step 17 - Uploading the TL250/TL300 Option Information

After confirming that the version has changed, the Options window will appear again. Click the *Get All Options* button.

Step 18 – Option Upload Confirmation

After the Console software has finished uploading the TL250/TL300 Options the following window will appear. Click the *Done* button.

Step 19 – Closing the Option Window

To close the Options window, click the *Done* button.