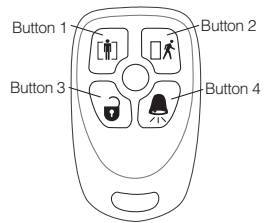


# WS4959 12-Function Wireless Key

## Operating Instructions

The WS4959 is the industry's first 12-function remote control. This key will allow you to arm and disarm, control garage doors and security gates, as well as a variety of other remote functions. This is the perfect remote to add to DSC's new garage relay module with integrated laser parking (RXL2-433) to control anything that can be turned ON or OFF.



### Operation of the WS4959

The small center button on the WS4959 is used as a level shift to move from functions 1-4, 5-8 and 9-12.

1. Press and hold the center button of the WS4959.
2. Watch as the LED on the WS4959 changes from red to green to amber and back to red. The RED LED indicates functions 1-4, the GREEN LED indicates functions 5-8 and the AMBER LED indicates functions 9-12.
3. When you see the appropriate color LED, release the center button. The LED will pulsate that color to indicate that you are in the appropriate functions. Press one of the four buttons and the LED will stop flashing.

**NOTE: The WS4959 always defaults to functions 1-4 so it is not necessary to hold the center button to access functions 1-4. If you are in Functions 5-8 or 9-12 the unit will 'time out' after 5 seconds if no buttons are pressed. Pressing and holding a key will continuously transmit that function.**

The default functions are as follows:



#### Stay Arming

Press this button to arm your system in the Stay mode. All perimeter zones will be armed, such as all window and door contacts, but the interior zones will remain inactive, allowing you to stay on the premises without setting off an alarm.



#### Away Arming

Press this button to arm your system in the Away mode. Both the interior and exterior zones will be armed, allowing you to exit the premises.



#### Disarm

Press this button to disarm your system. You do not have to enter your access code when you use the key to disarm the system.



#### Panic

Press this button to notify your central monitoring station of a situation requiring the police, such as a break-in. **NOTE: By default, the user must press and hold the button for 3 seconds to activate the panic function (requires a monitored account).**

### How to Enroll the WS4959

The following outlines the basic steps for programming and enrolling this device on PowerSeries receivers. For additional options or for other receivers please refer to the specific receiver installation manual.

#### Step 1 - Program Electronic Serial Number (ESN)

Section [804], subsections [41] - [56]

[41] Key #1       ... [56] Key #16

- Enter the 6 digits ESN located on the back of the unit to enroll functions 1-4 (Red LED mode)
- To enroll functions 5-8 (Green LED mode): add 1 to the ESN and program in separate subsection (e.g., ESN 612345 (+1) becomes 612346)
- To enroll functions 9-12 (Amber LED mode): add 2 to the ESN and program in separate subsection (e.g., ESN 612345 (+2) becomes 612347)

#### Step 2 - Partition Assignment (required if various modes operate on different partitions)

Section [804], subsections [91] - [92]

Section [804], subsection [69] (RF5501-433 v5.0)\*

[91] Wireless Keys #1-8 Partition Assignment

\*[69] Wireless Keys #1-16 Partition Assignment (1-8)

Default = OFF

OPTION ON

OPTION OFF

Default = 01

|Option 1

Key #1 Partition 2

Partition1

Key #1

:

:

:

:

|Option 8

Key #8 Partition 2

Partition1

Key #16

**[92] Wireless Keys #9-16 Partition Assignment**

<b>Default = OFF</b>	<b>OPTION ON</b>	<b>OPTION OFF</b>
_____ Option 1	Key #9 Partition2	Partition1
:	:	:
_____ Option 8	Key #16 Partition2	Partition1

**Step 3 - Program Function Buttons**

Section **[804]**, subsections **[59] - [60]**

Section **[804]**, subsections **[61] - [68]** (RF5501-433 v5.0)\*

**[59] Partition 1 Wireless Key Options \* [61] Partition 1 Wireless Key Options (RF5501-433)**

0	3	Button 1 <i>Stay Arming</i>
0	4	Button 2 <i>Away Arming</i>
2	7	Button 3 <i>Disarm</i>
3	0	Button 4 <i>Panic</i>

0	3	Button 1 <i>Stay Arming</i>
0	4	Button 2 <i>Away Arming</i>
2	7	Button 3 <i>Disarm</i>
3	0	Button 4 <i>Panic</i>

:

:

**[60] Partition 2 Wireless Key Options \* [68] Partition 8 Wireless Key Options (RF5501-433)**

0	3	Button 1 <i>Stay Arming</i>
0	4	Button 2 <i>Away Arming</i>
2	7	Button 3 <i>Disarm</i>
3	0	Button 4 <i>Panic</i>

0	3	Button 1 <i>Stay Arming</i>
0	4	Button 2 <i>Away Arming</i>
2	7	Button 3 <i>Disarm</i>
3	0	Button 4 <i>Panic</i>

For other options please refer to your appropriate receiver manual

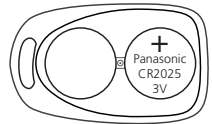
**Replacing the Batteries**

To replace the battery, remove the top cover by inserting a coin into the slot located on the bottom right corner and twist. Remove the screw at the center of the board to expose the batteries. Replace both batteries with Panasonic CR-2025 lithium batteries (see diagram).

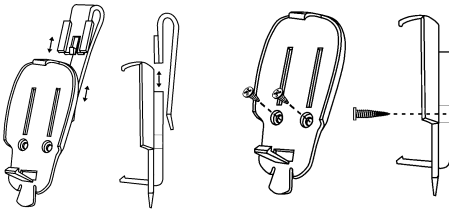
Under normal conditions the batteries can last from 5 to 8 years. During each button press the key will send the status of its battery to the control panel receiver. If the battery is low the trouble light on the controls panel's keypad will turn ON.

**NOTE: The polarity of the battery must be observed, as shown in the diagram above. Improper handling of lithium batteries may result in heat generation, explosion or fire, which may lead to personal injuries.**

**WARNING: DANGER OF EXPLOSION IF BATTERIES ARE INSTALLED INCORRECTLY. REPLACE ONLY WITH THE SAME OR EQUIVALENT TYPE RECOMMENDED BY THE MANUFACTURER. Disposal of used batteries must be made in accordance with the waste recovery and recycling regulations in your area. Do not try to recharge these batteries. Keep batteries away from small children. If batteries are swallowed, promptly see a doctor.**



**Belt Clip Assembly and Mounting**



**Compatibility**

RXL2-433, PC4164-433, PC5132-433, RF5108-433, RF5501-433, NT9005-433.

**Specifications**

- 32° to 120°F (0-49°C)
- 5-93% RH
- Water Resistant

**FCC COMPLIANCE STATEMENT**

**CAUTION: Changes or modifications not expressly approved by Digital Security Controls could void your authority to use this equipment.** This device complies with Part 15 of the FCC Rules. Operation is subject to the following two conditions: (1) This device may not cause harmful interference, and (2) this device must accept any interference received, including interference that may cause undesired operation.

**IC: 160A-WS4959** The term "IC:" before the radio certification number only signifies that Industry Canada technical specifications were met.



©2005 Digital Security Controls, Toronto, Canada  
 Technical Support: 1-800-387-3630 • [www.dsc.com](http://www.dsc.com)  
 Printed in Taiwan