

---

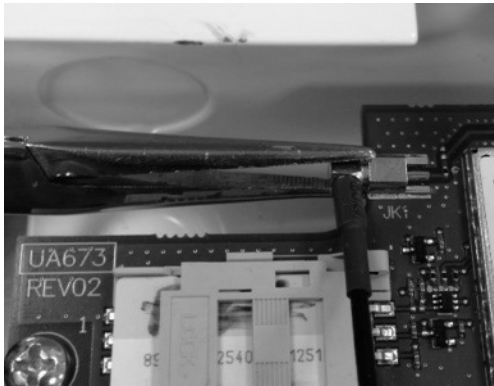
## 3G4010 PCB Replacement Guide

---

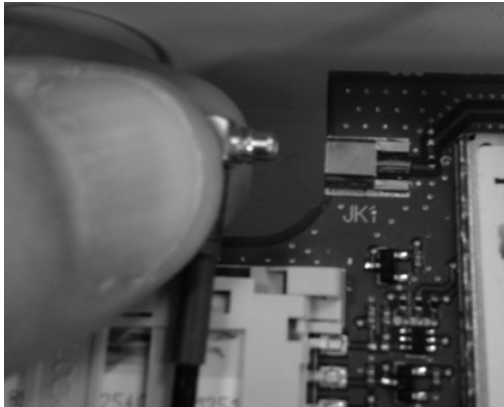
These instructions must be used in conjunction with the 3G4010 Installation Manual. Observe all specified safety precautions during the board replacement.

**NOTE:** The 3G4010 PCB must be replaced by service persons only.

1. Completely power down the 3G4010 by removing power to the DC IN input terminals and disconnecting the battery leads (red and black wires).
2. Disconnect the telecommunications network wiring and any connection to the other terminals.



3. Carefully disconnect the cellular antenna from the cellular radio module on the 3G4010. To remove the cable from the radio module, use needle nose pliers, grip the antenna connector and pull out, directly away from the PCB antenna socket. (see photo above.)



**NOTE:** Any other method for removal of the antenna may cause permanent damage to the on-board connector.

---

- 
4. The 3G4010 PCB is secured by screws and/or plastic standoffs located at the four corners of the board. Carefully squeeze the top of each standoff to release the PCB from the standoff. Needle nose pliers are recommended.
  5. If you break a standoff you will have to remove the cabinet from the wall to remove the broken part. Extra standoffs are provided with the replacement PCB.
  6. Once the old PCB is removed from the cabinet, *slide* the SIM card holder to the right and carefully remove the SIM card from the PCB.
  7. Insert the SIM card into the replacement PCB. The notch on the SIM card should face away from the LEDs. Once the card is properly seated in the connector, press down and *slide* it into the "LOCK" position as indicated on the SIM card holder.
  8. Mount the 3G4010 PCB back into the cabinet. To mount, align the standoff holes and tighten the screws that were removed from step 4 (if applicable). When mounting the PCB onto the standoffs, only apply pressure to the corners of the PCB next to the standoff mounting hole. Do not apply pressure to the center of the PCB or any of the components.
  9. Reconnect all wiring removed in step 2, except power, (i.e., do not attach the battery or apply power to the DC IN terminals).
  10. Perform a hardware default on the unit by following these steps:
    - a. Power down the unit (remove primary DC power and remove the backup battery) and remove all connections to Zone 1, Zone 2, PGM1 and PGM.
    - b. Connect a wire between Z2 (terminal 14) and PGM2 (terminal 8) or Z1 (terminal 13) and PGM1 (terminal 7).
    - c. Power up the radio by connecting the battery (if present) first and then primary DC power.
    - d. Wait for 20 seconds and then completely power down the unit.
    - e. Disconnect the wire between the Zone and PGM terminals.

**NOTE:** A hardware default must be performed when the SIM card is being swapped. The red LED will be on solid, the blue LED will be off and the signal strength LEDs will display the average signal strength, indicating the unit is establishing a connection to get its programming from the network. This may take several minutes. Please refer to the 3G4010 Installation Manual if the red LED starts to flash on its own.

