



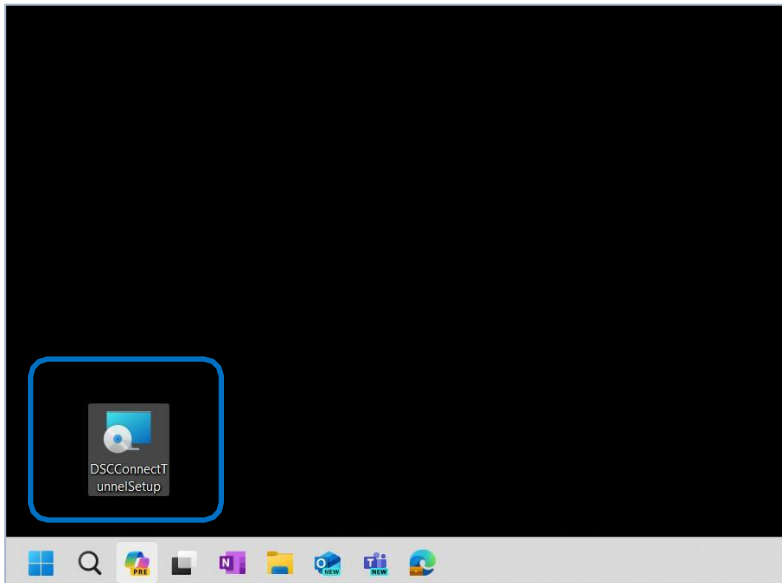
DSC Connect – Upload/Download

Step 1 [Download the DSC Connect Modem \(Click Here\)](#)

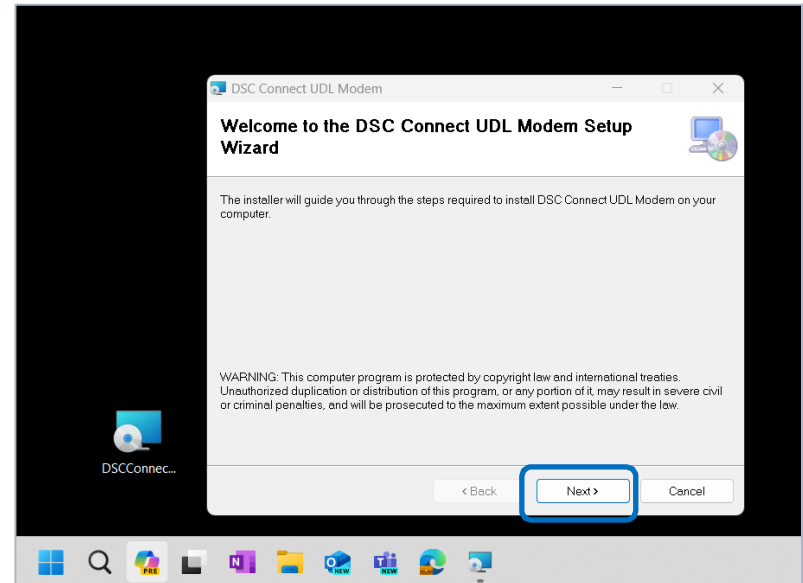
Double-click the **DSCConnectTunnelSetup.msi** installation file (Pic. 1).

Note: If Microsoft Defender tries to prevent the installation, click **More info** > **Run anyway**.

Press **Next** to proceed (Pic. 2).



Pic. 1



Pic. 2



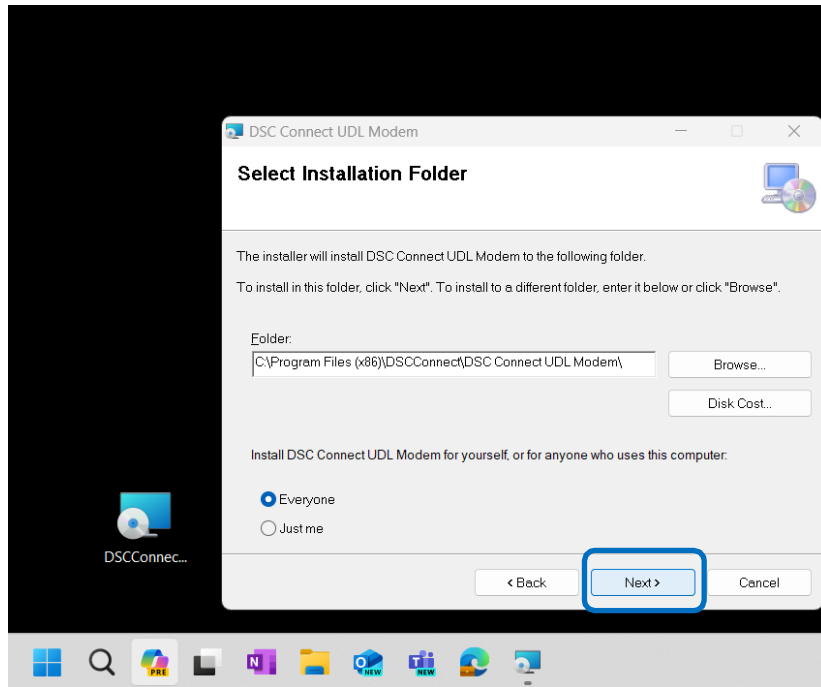
Software Modem Installation

Step 2

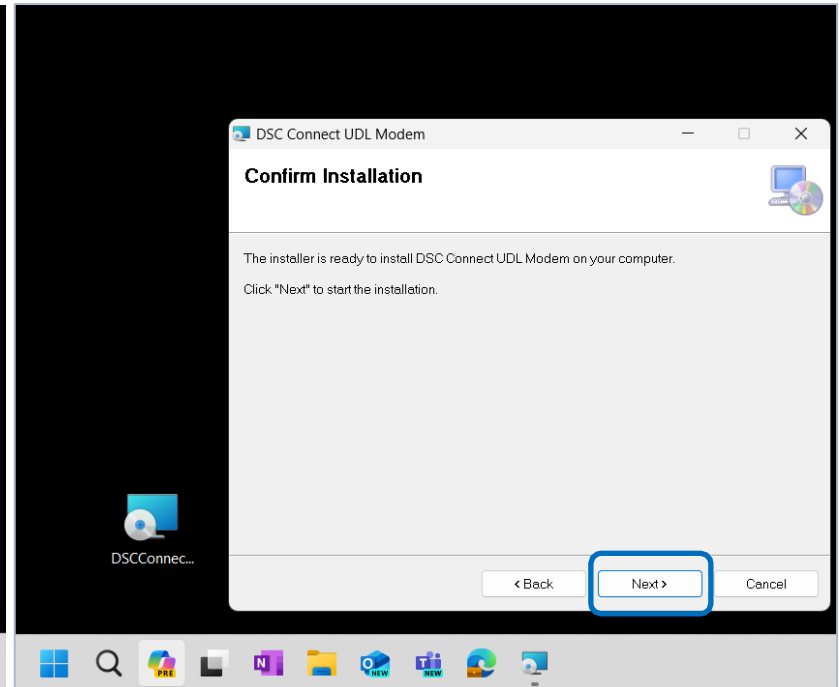
Press **Next** without changing the preconfigured installation location (Pic. 3).

Then start the installation (Pic. 4).

Note: Do not interrupt the installation progress.



Pic. 3



Pic. 4



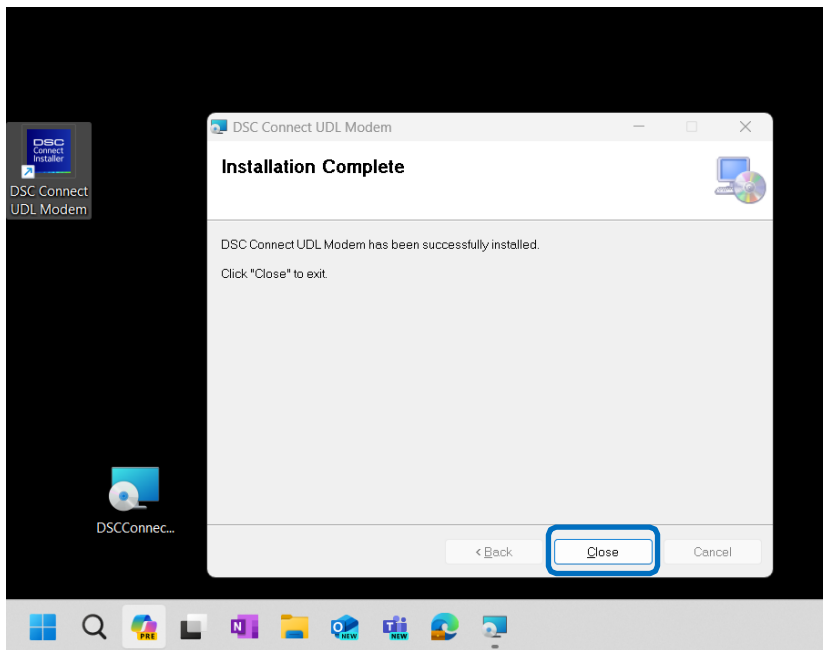
Software Modem Installation

Step 3

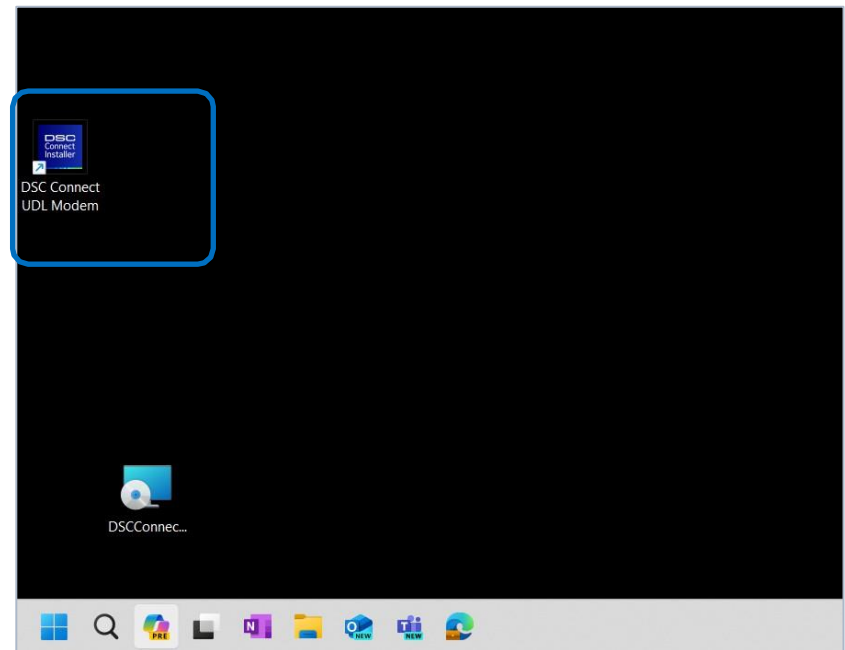
After the installation is complete, press the **Close** button to exit the wizard (Pic. 5).

A shortcut named **DSC Connect UDL Modem** should appear on your desktop (Pic. 6).

Open the program by double-clicking the shortcut.



Pic. 5



Pic. 6

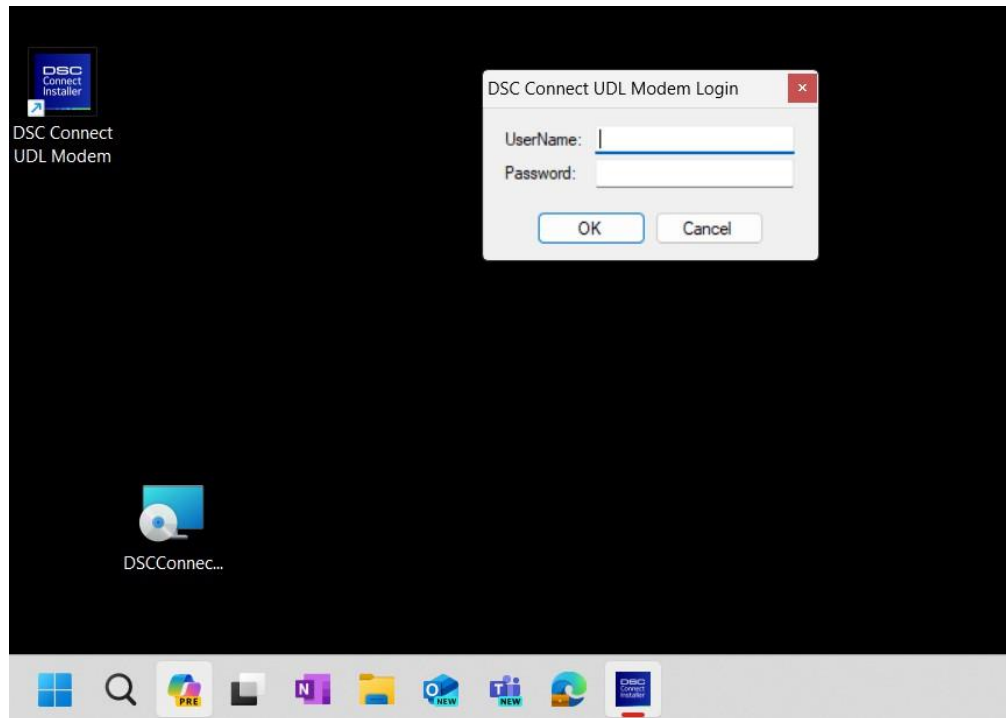


Software Modem Installation

Step 4

Enter your installer credentials (Pic. 7).

These are the same credentials you have for the **DSC Connect Installer Portal**.



Pic. 7

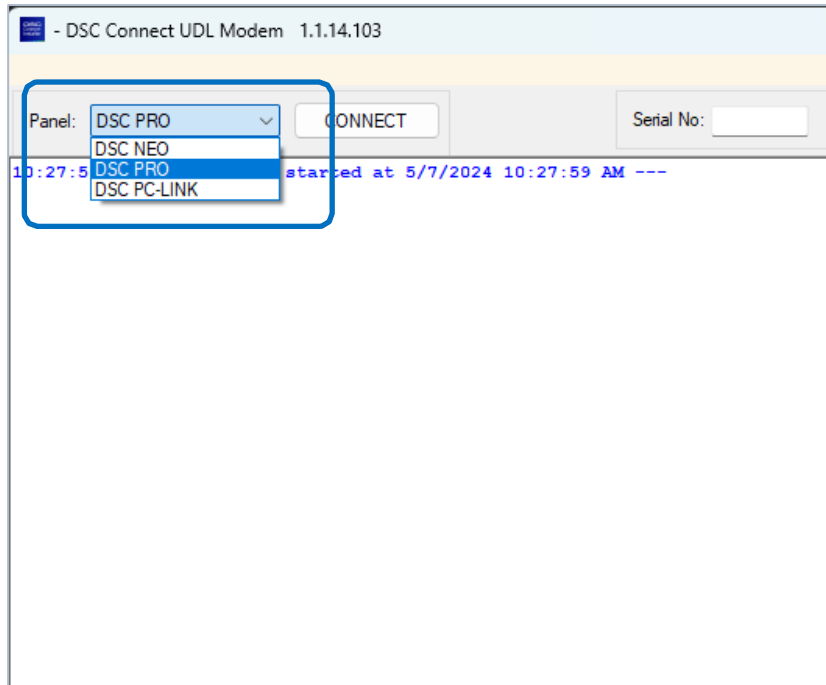


Software Modem Installation

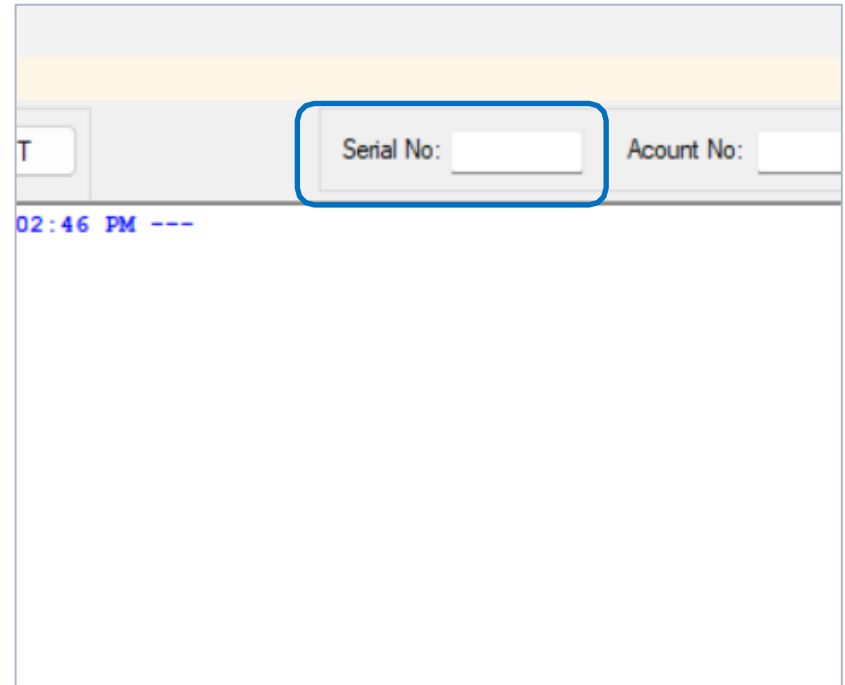
Step 5

Navigate to the dropdown menu and select the desired panel type (Pic. 8).

Add your device serial number by clicking the **Serial No** text box (Pic. 9).



Pic. 8

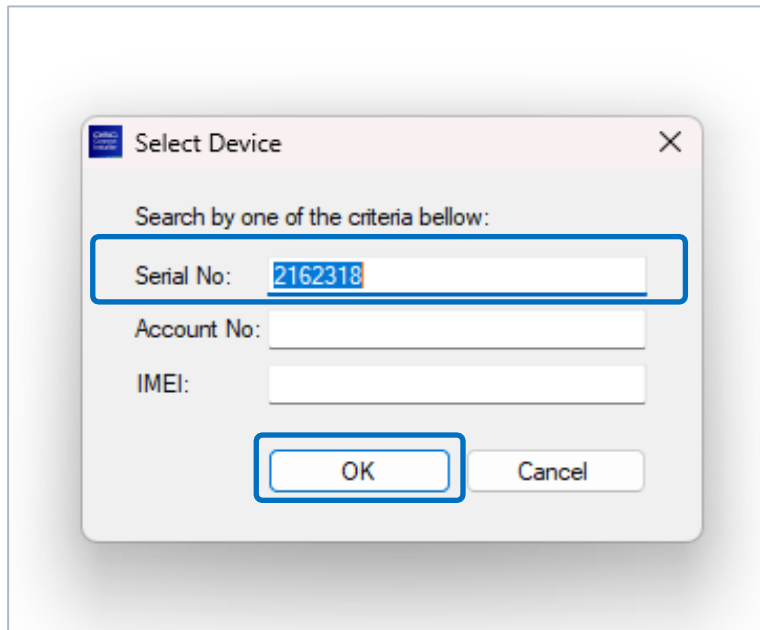


Pic. 9

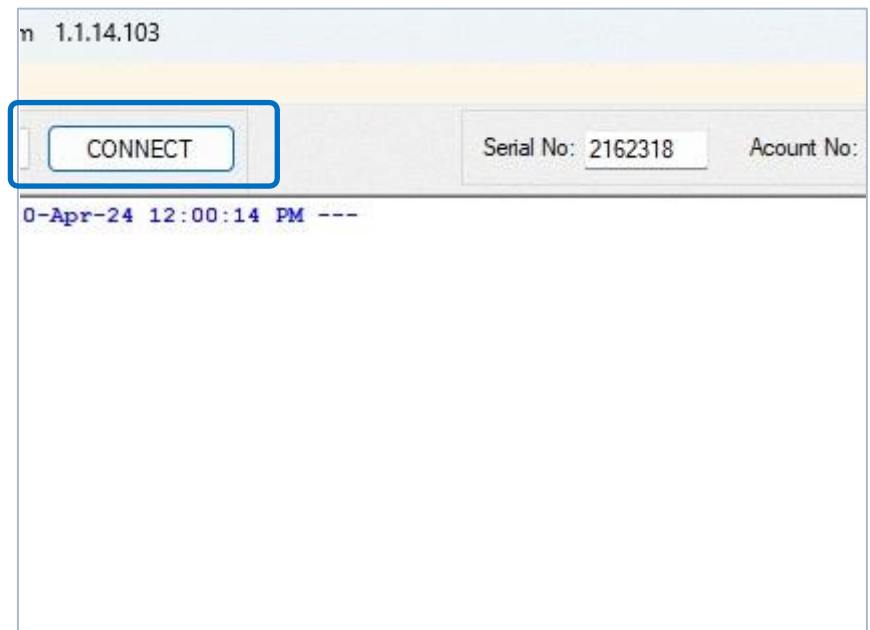
In the pop-up dialog, enter your Device **Serial number** and click the **OK** button (Pic. 10).

Click the **Connect** button (Pic. 11).

Step 6: Open the **DLS software**.



Pic. 10

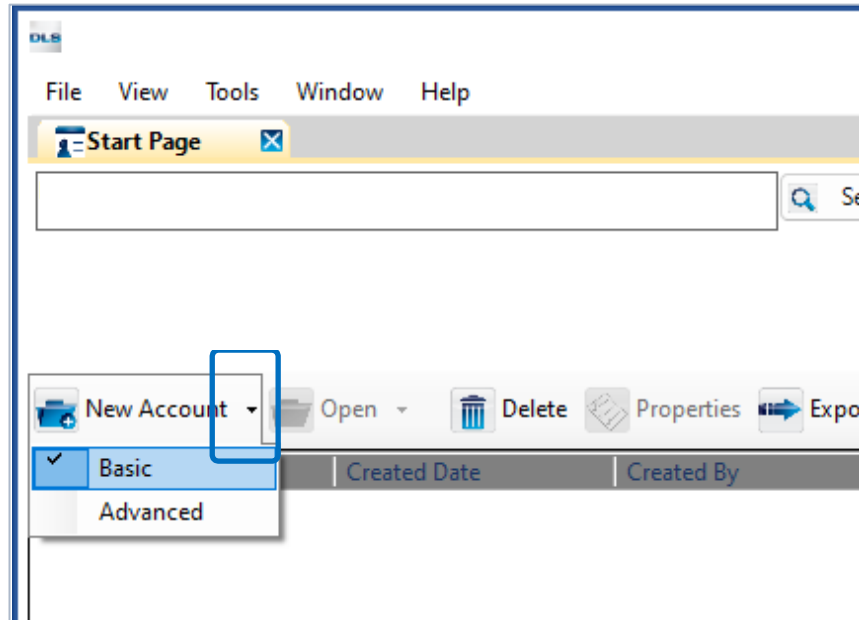


Pic. 11

Create an account for the DSC PowerSeries NEO

Step 1: Start DLS 5 Program and create a New Account by clicking the **New Account** dropdown.

From the options select **Basic**.

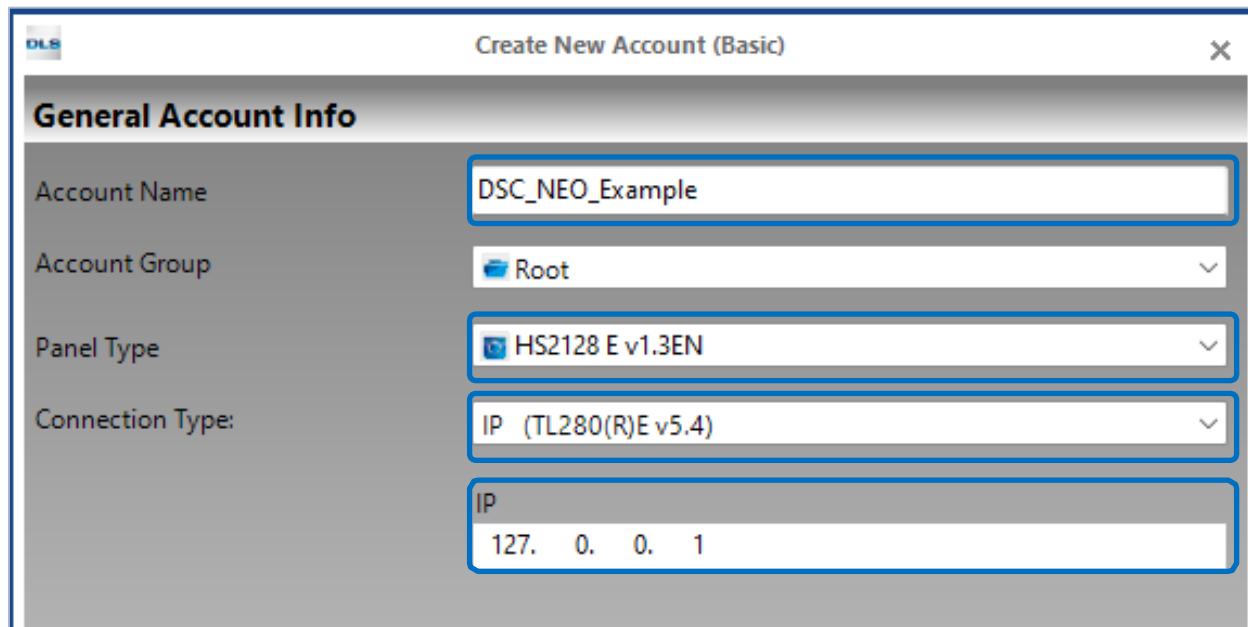


Pic. 12

Create an account for the DSC PowerSeries NEO

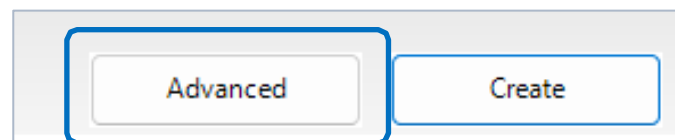
Step 2: Enter the **Account Name** and **Panel Type**. Select connection Type **IP (TL280(P)E v5.4**.

Enter the IP address **127.0.0.1** under the **IP** section.



Pic. 13

Then click the **Advanced** button:

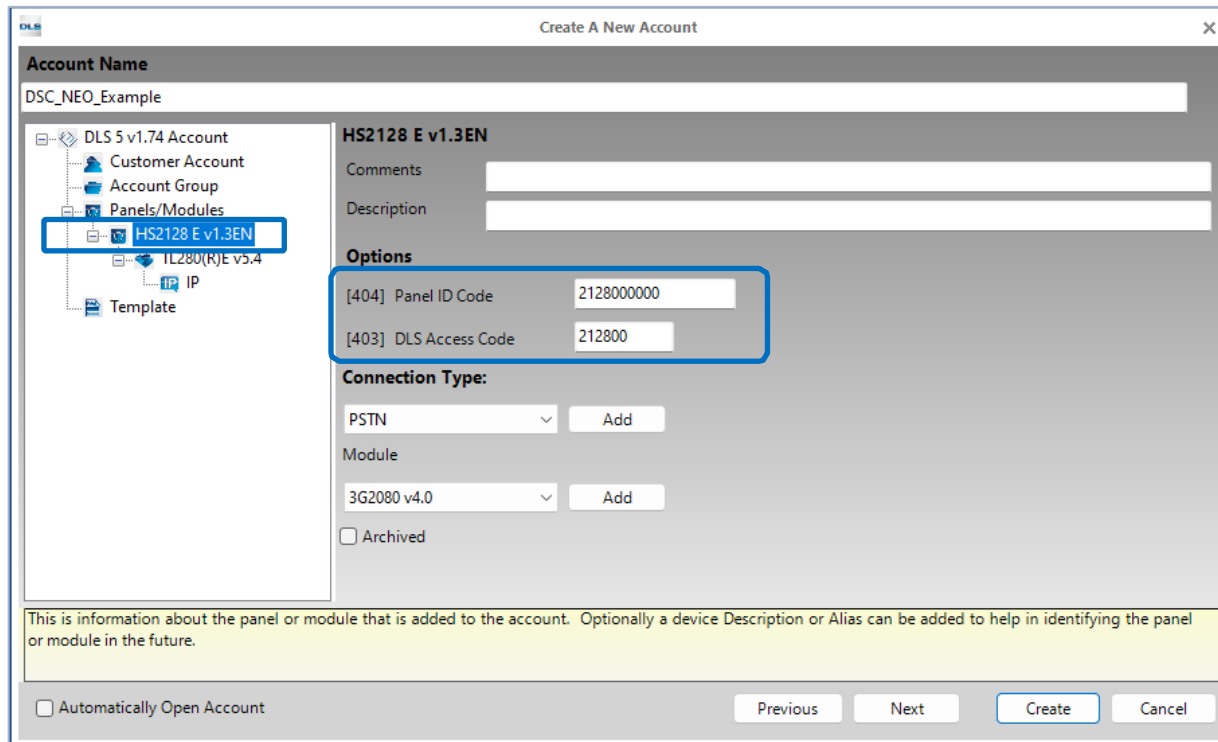


Pic. 14

Create an account for the DSC PowerSeries NEO

Step 3: In the Advanced menu, select your panel type under the **Panels/Modules** section.

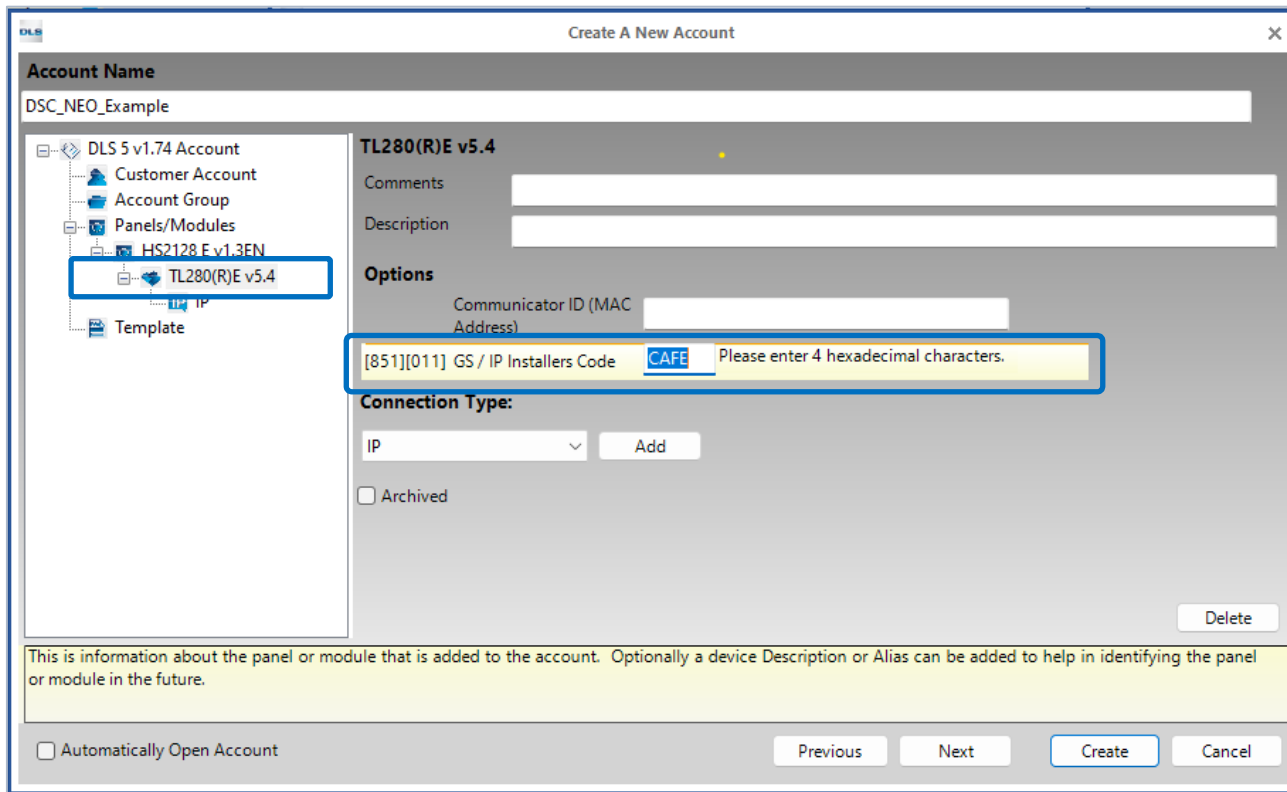
Then modify the **Panel ID Code** and **DLS Access Code** in accordance with Panel Installer Sections [404] and [403], respectively.



Pic. 15

Create an account for the DSC PowerSeries NEO

Step 4: Navigate to **Panel Type** (e.g. HS2128 E v1.3EN) > **TL280(R)E v5.4** and set the **GS / IP installers Code** to **CAFE**.



Pic. 16

Create an account for the DSC PowerSeries NEO

Step 5: Navigate to **Panel Type** (e.g. HS2128 E v1.3EN) > **TL280(R)E v5.4** > **IP** and set the **Port** to **5123**.

Finally, click the **Create** button.

Create A New Account

Account Name
DSC_NEO_Example

DLS 5 v1.74 Account

- Customer Account
- Account Group
- Panels/Modules
 - HS2128 E v1.3EN
 - TL280(R)E v5.4
 - IP**
 - Template

IP
IP: 127. 0. 0. 1
Port: 5123
TLink Account Code: _____

Advanced
Receiver IP: 127. 0. 0. 1
Receiver Port: 3064
Receiver Password: ****
 Use Alternate Table

Delete

The Ethernet/Internet connection type is used to establish a connection to your communicator or panel over the Internet, LAN or WAN. Please enter the Public IP address and Port number that is configured to accept incoming DLS connections to the communicator.

Automatically Open Account

Previous Next **Create** Cancel

Pic. 17

Create an account for the DSC PowerSeries

Step 1: Start DLS 5 Program and create a new account by clicking the **New Account** dropdown and select **Basic**.

Step 2: Under **General Account Info**, enter an **Account Name** and the **Panel Type**.

For **Connection type** select **IP (TLink)**.

Enter **IP** 127.0.0.1.

Encryption Key must be left empty.

Enter **Panel ID Code** and **DLS Access Code**.

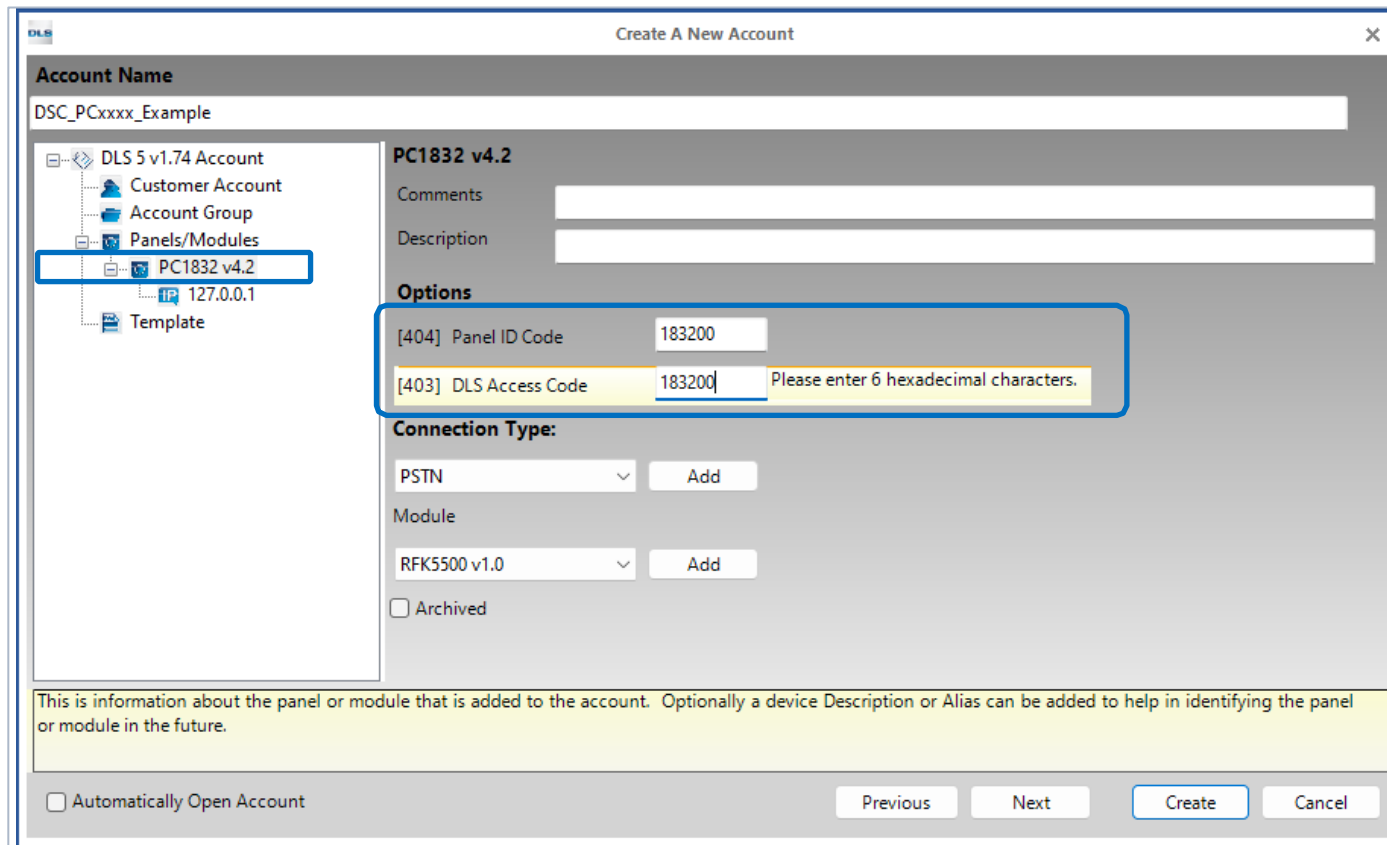
Click the **Advanced** button.

Pic. 22

Create an account for the DSC PowerSeries

Step 3: From **Panels/Modules** select the **Panel type** (e.g. PC1832 v4.2).

Then verify **Panel ID Code** and **DLS Access Code**.



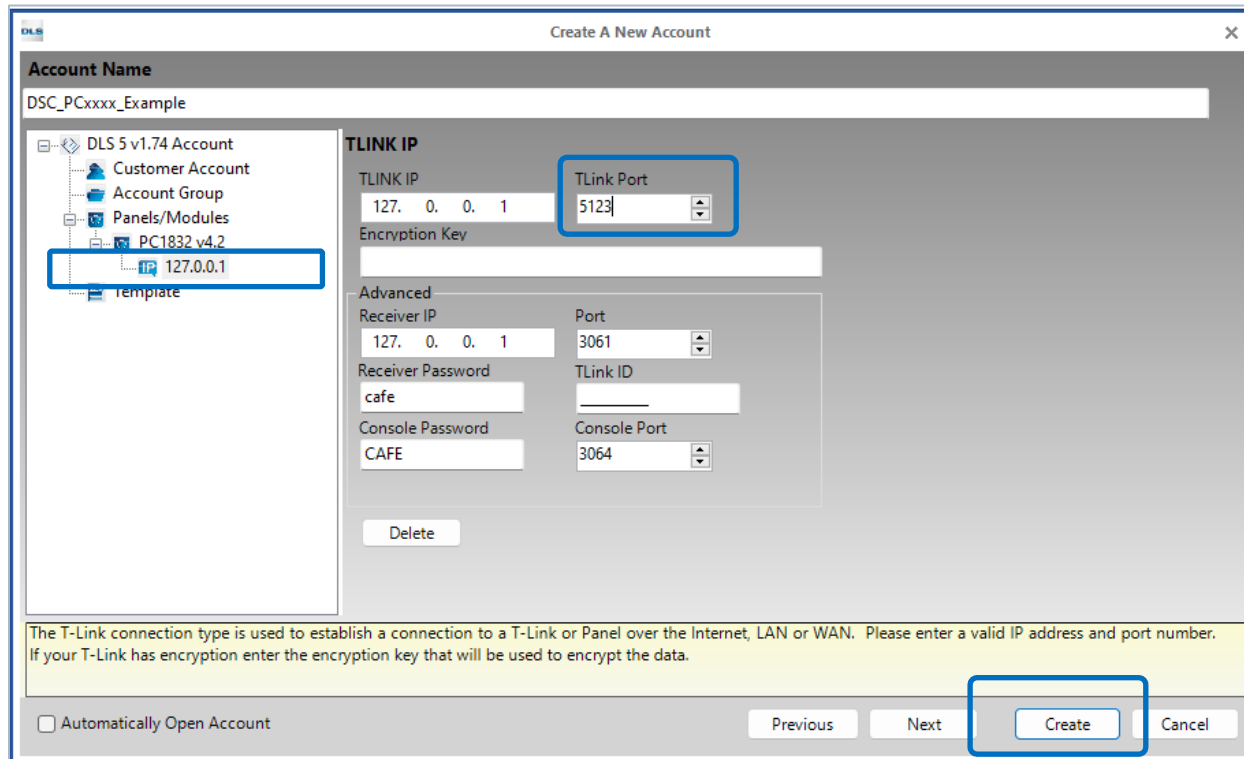
Pic. 23

Create an account for the DSC PowerSeries

Step 4: Go to **Panels/Modules > Panel Type** (e.g. PC1832 v4.2) > **127.0.0.1**.

Set port **5123** under the **TLink Port**.

Then click the **Create** button.

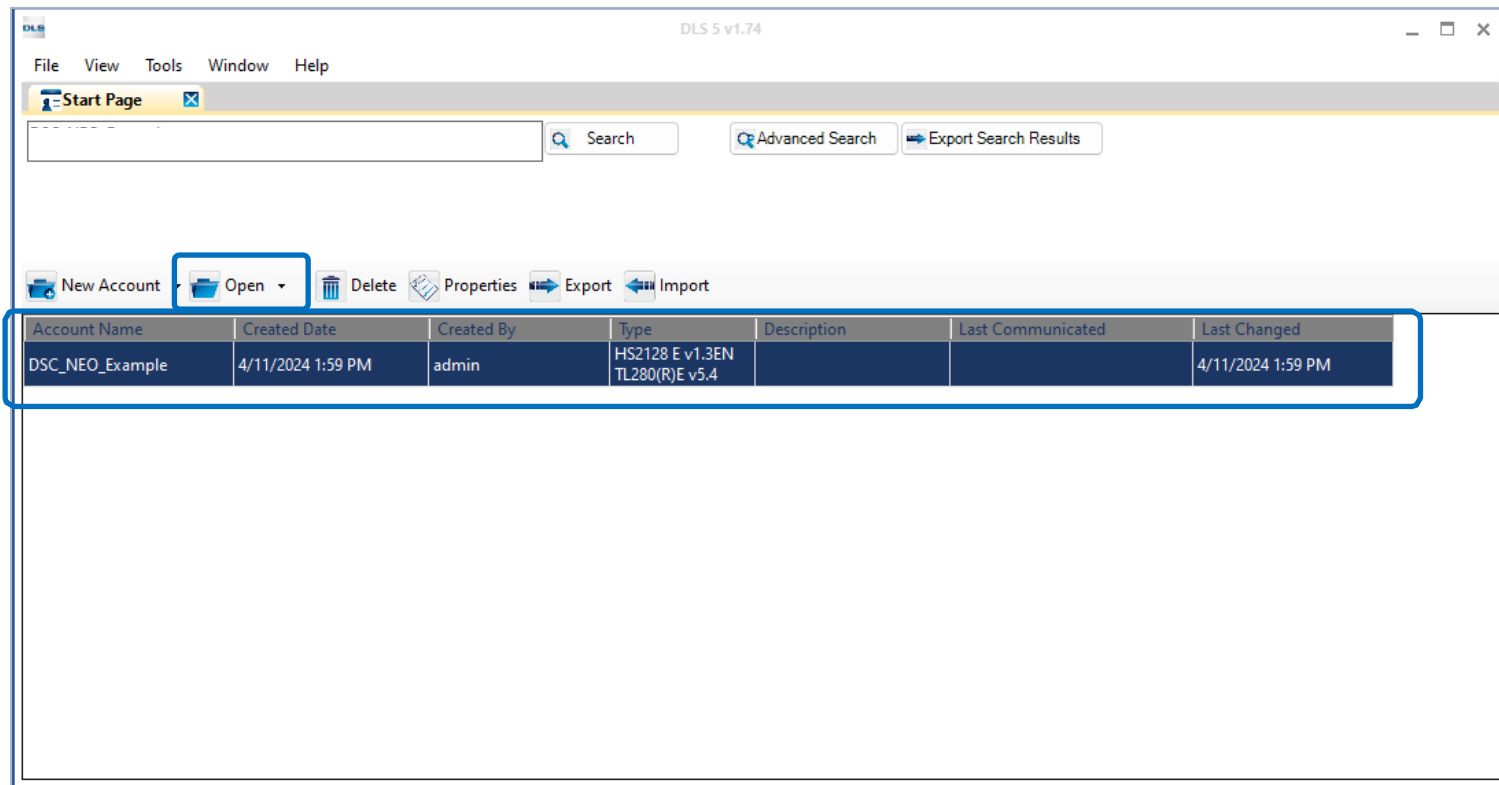


Pic. 24

Account created successfully

Once you have successfully set up your account for your **PowerSeries**, **PowerSeries NEO**, you can view it on the DLS 5 Start Page.

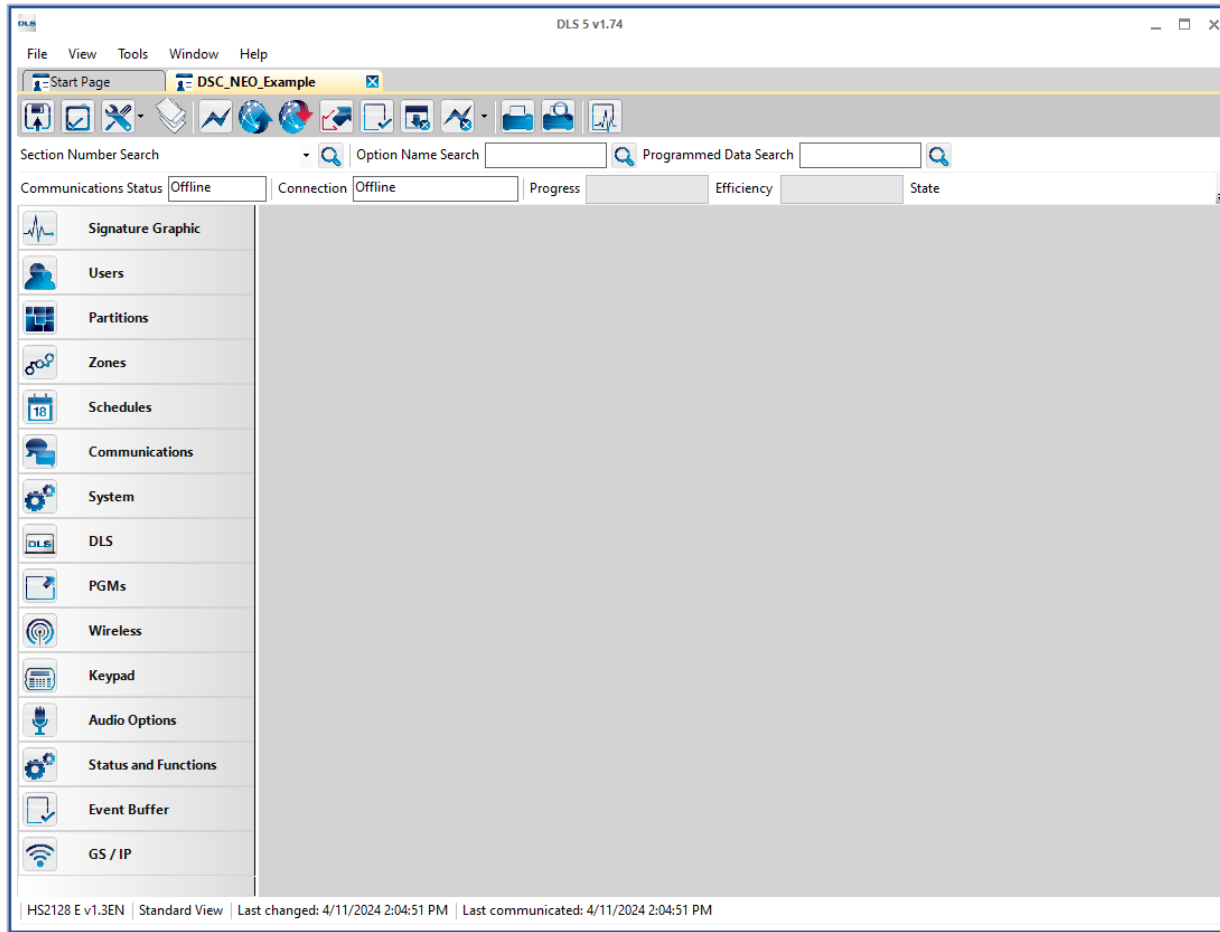
To open the account, double-click it or, alternatively, click the account and then click the **Open** button.



Pic. 25



When you open the account, it loads in a new tab.

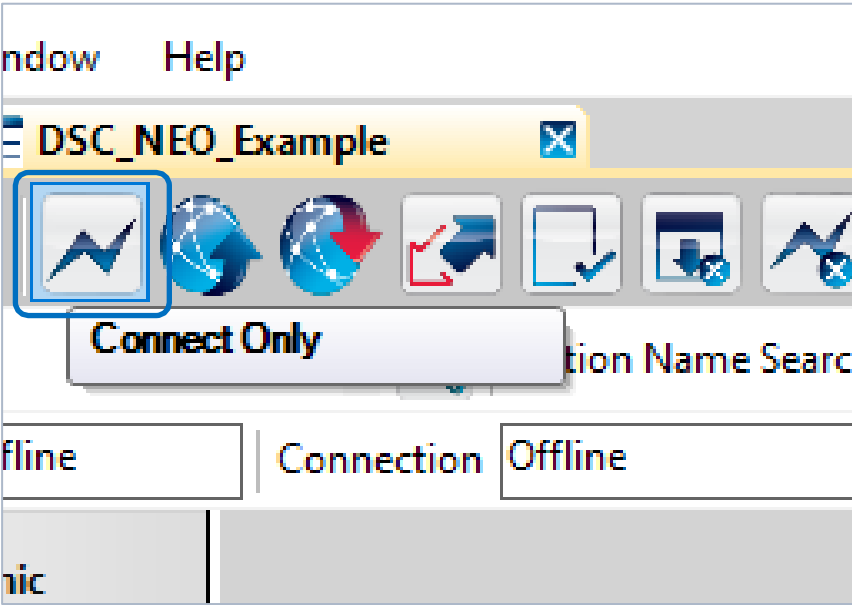


Pic. 26

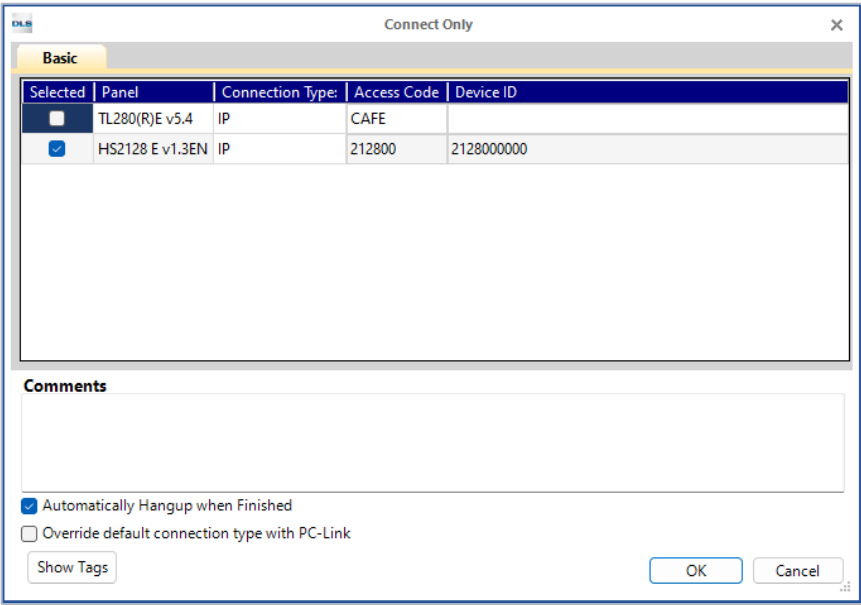
Connect to panel

To connect to the panel, click the **Connect Only** button and click **OK** (Pic. 27).

Note: For DSC PowerSeries NEO unselect TL280(R)E v5.4 first (Pic. 28).



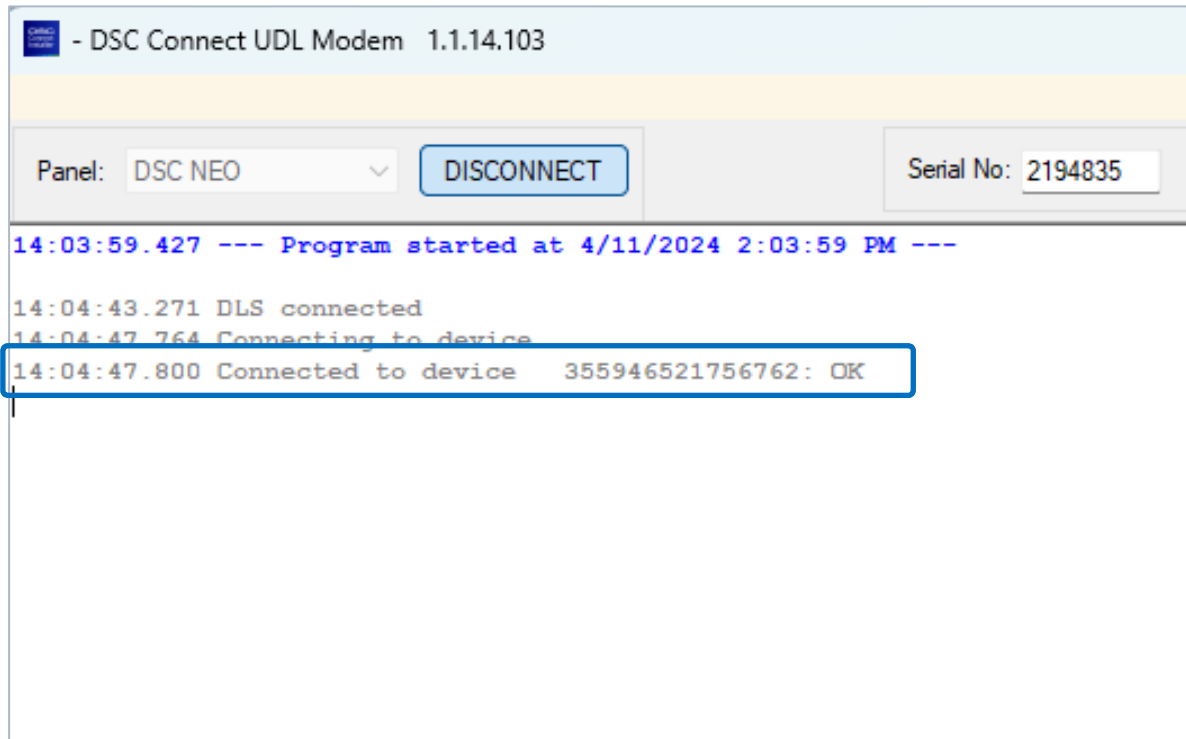
Pic. 27



Pic. 28

Connect to panel

When your device connects, you will see a confirmation in the **DSC Connect UDL Modem** log:

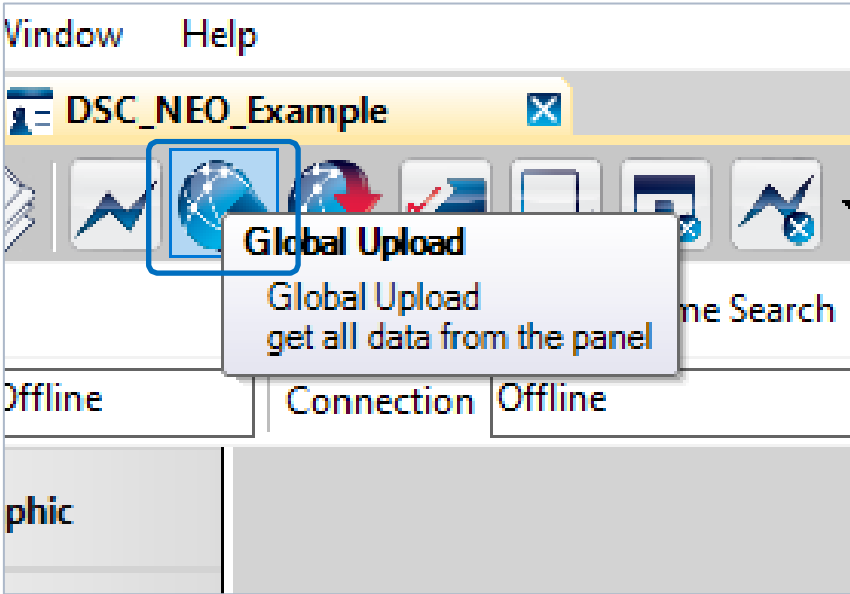


Pic. 29

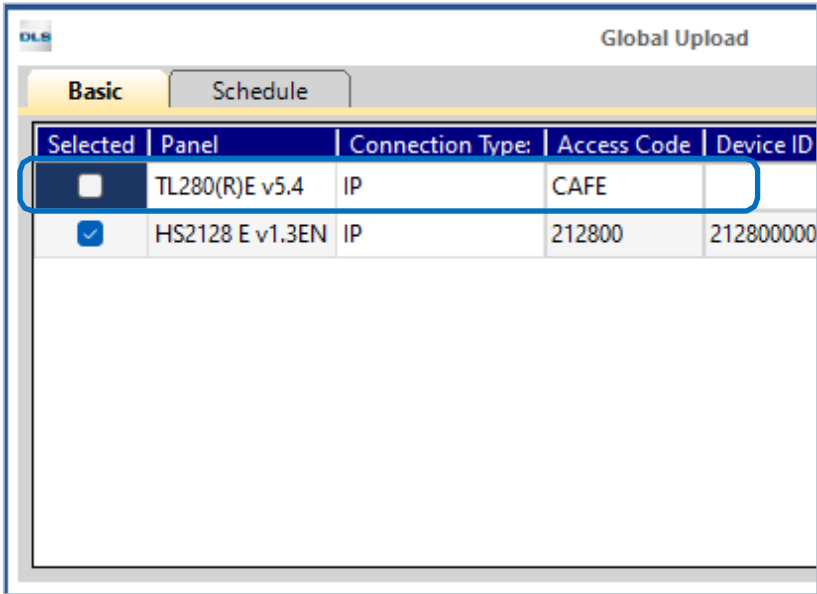
Global Upload

To get all data from the panel, click the **Global Upload** button and then click **OK**.

Note: For *PowerSeries NEO* panels, unselect **TL280(R)E v5.4** first.



Pic. 30

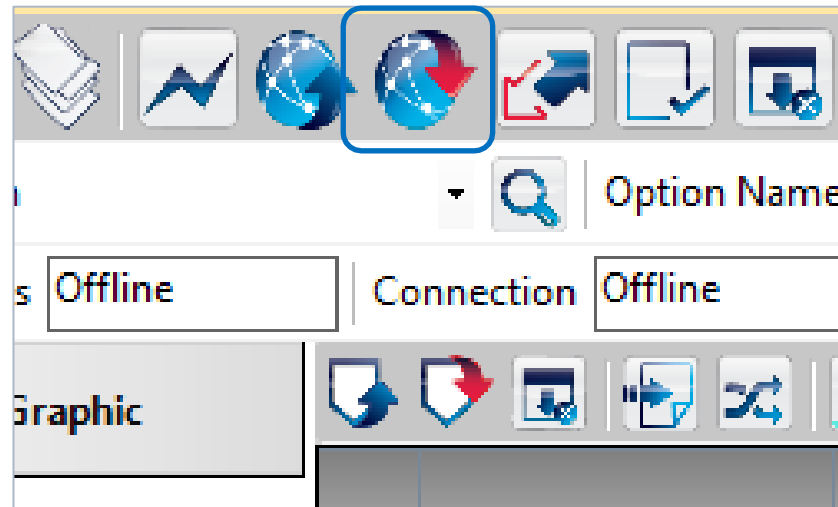


Pic. 31

Global Download

To upload all data to the panel, click the **Global Download** button (Pic. 32) and then click **OK**.

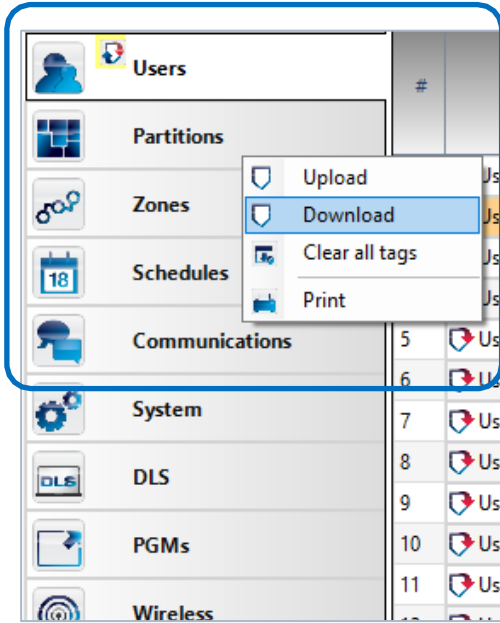
Note: You can use Global Download for **PowerSeries** and **PowerSeries Pro** panels only!



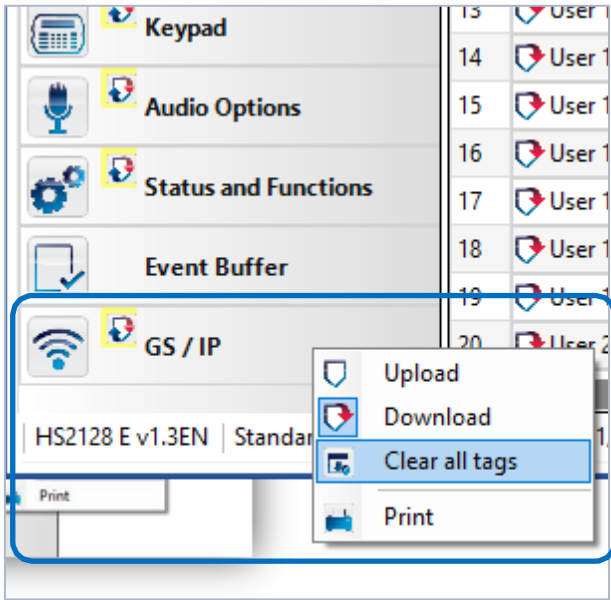
Pic. 32

Global Upload (for PowerSeries NEO)

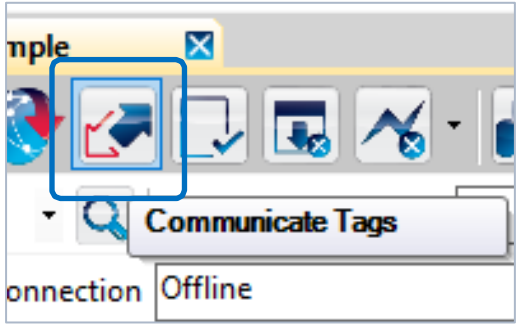
Note: For **PowerSeries NEO** you must manually select all options and set them for **Download** as shown in Pic. 33, and **Clear all tags** for **GS / IP** option only (Pic. 34), instead of performing a Global Download. Finally, click the **Communicate Tags** button (Pic. 35) and then click **OK** (Pic. 36).



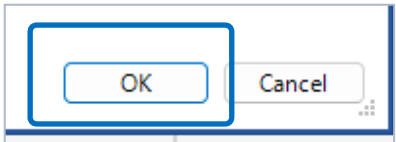
Pic. 33



Pic. 34



Pic. 35



Pic. 36



Phone: 1 800 387 3630

Email: intrusion-support@jci.com

Website: <https://www.dsc.com/>