

tyco



AlarmInstall App Installer guide

Rev. 02



AlarmInstall

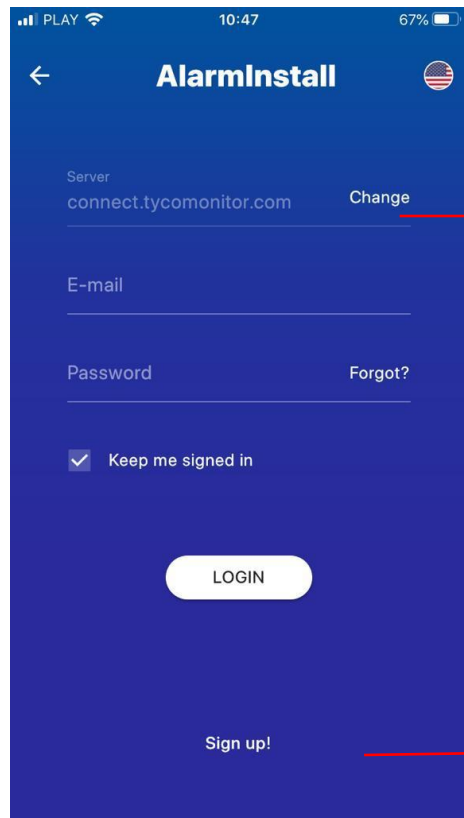
- AlarmInstall is an installer-friendly mobile app that speeds up and simplifies installations of PowerSeries Neo and PowerSeries PRO alarm systems, and enables efficient remote maintenance.
- It works with local PowerManage servers as well as Tyco cloud servers
- The app is also used to activate control panels on PowerManage local and cloud servers in order for end-user to operate them, replacing ConnectAlarm Activation App
- The account you had created with older version of AlarmInstall or with ConnectAlarm Activation app will have to be recreated again using 2-factor authorization

AlarmInstall

- Before using the app, panels have to be programmed and connection with server needs to be established. Panel programming is explained in the following documents:
 - PowerSeries Neo with communicator 4.11
 - <https://cms.dsc.com/download.php?t=1&id=25698>
 - PowerSeries Neo with communicator 5.03 to 5.41
 - <https://cms.dsc.com/download.php?t=1&id=25699>
 - PowerSeries PRO
 - <https://cms.dsc.com/download.php?t=1&id=25700>

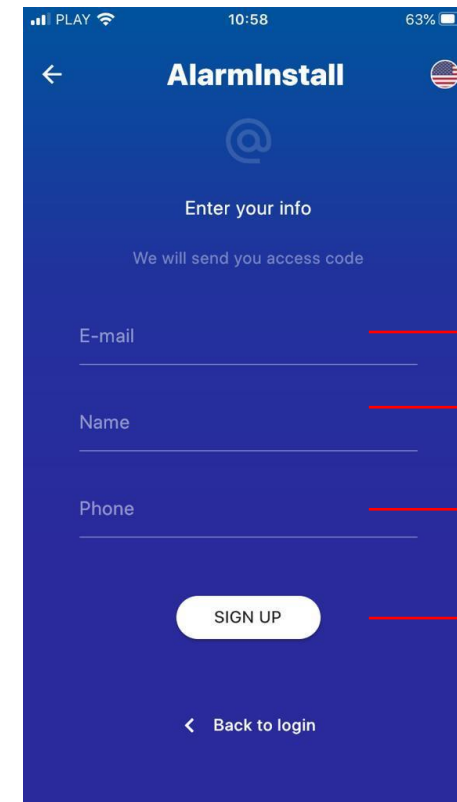
AlarmInstall – first connection

- With first connection, you will need to set up an account on server you connect to. Accept EULA and Privacy Notice and then choose „Remote” mode of operation.
- Next, enter server details and choose „Sign Up”, then fill your details. You will be sent an access code.



Enter server details

Press Sign Up



Enter e-mail

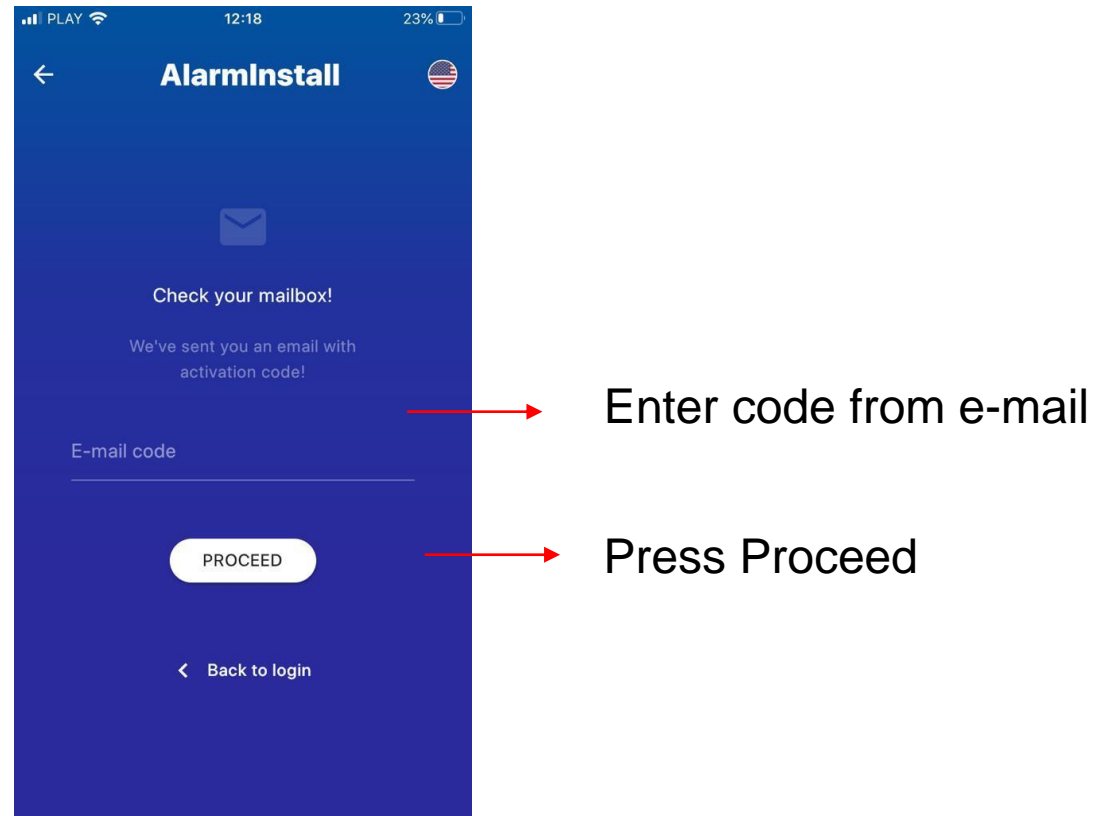
Enter name

Enter phone #

Press Sign Up

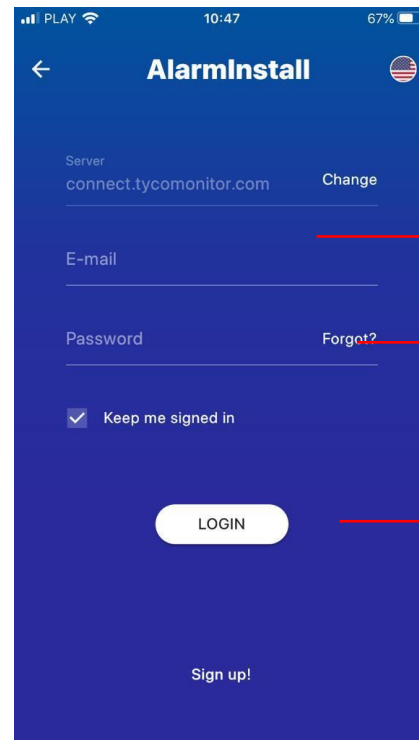
AlarmInstall – first connection

- An e-mail will be sent to the mailbox you provided, with an authorization code.
- Please enter the code on the screen below and press Proceed.



AlarmInstall – first connection

- Please log in with credentials you just set
- If you choose for your sign in details to be kept (checkbox “Keep me signed in”), you will be asked if you want to enable biometric login (FaceID / Touch ID). If you don’t want to use biometric login, you will be asked another question if you want your sign in details to be remembered.



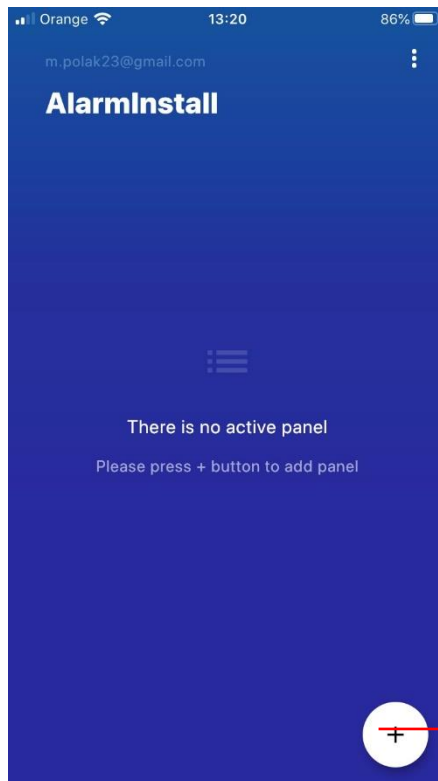
Enter e-mail address

Enter password

Press LOGIN

AlarmInstall – first connection

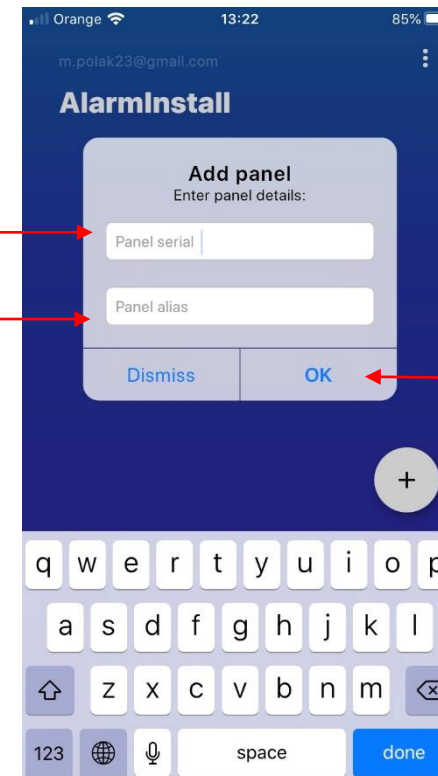
- Once you log in, you can start adding panels to the app database by pressing "+" button in bottom right corner of the app screen



Press to add panel

Insert full panel serial number / panel ID

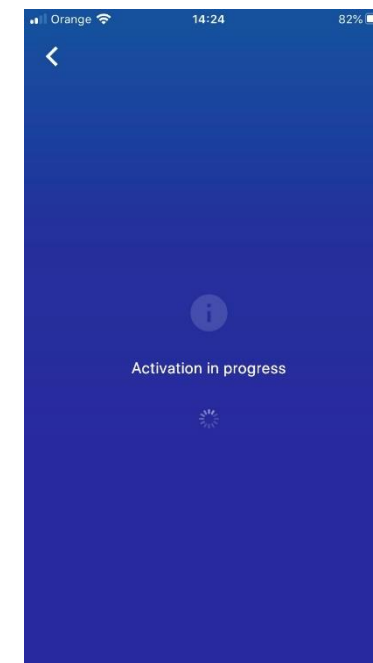
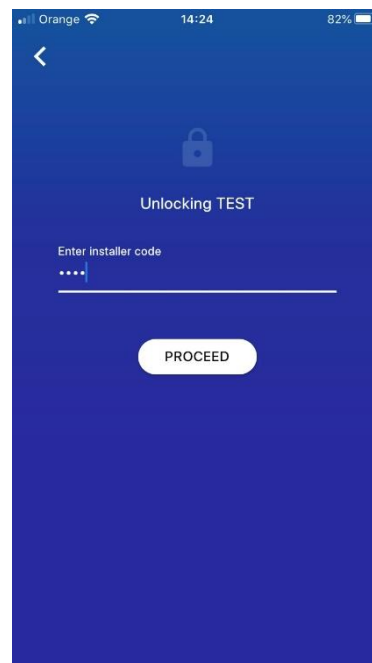
Name your panel



Press OK

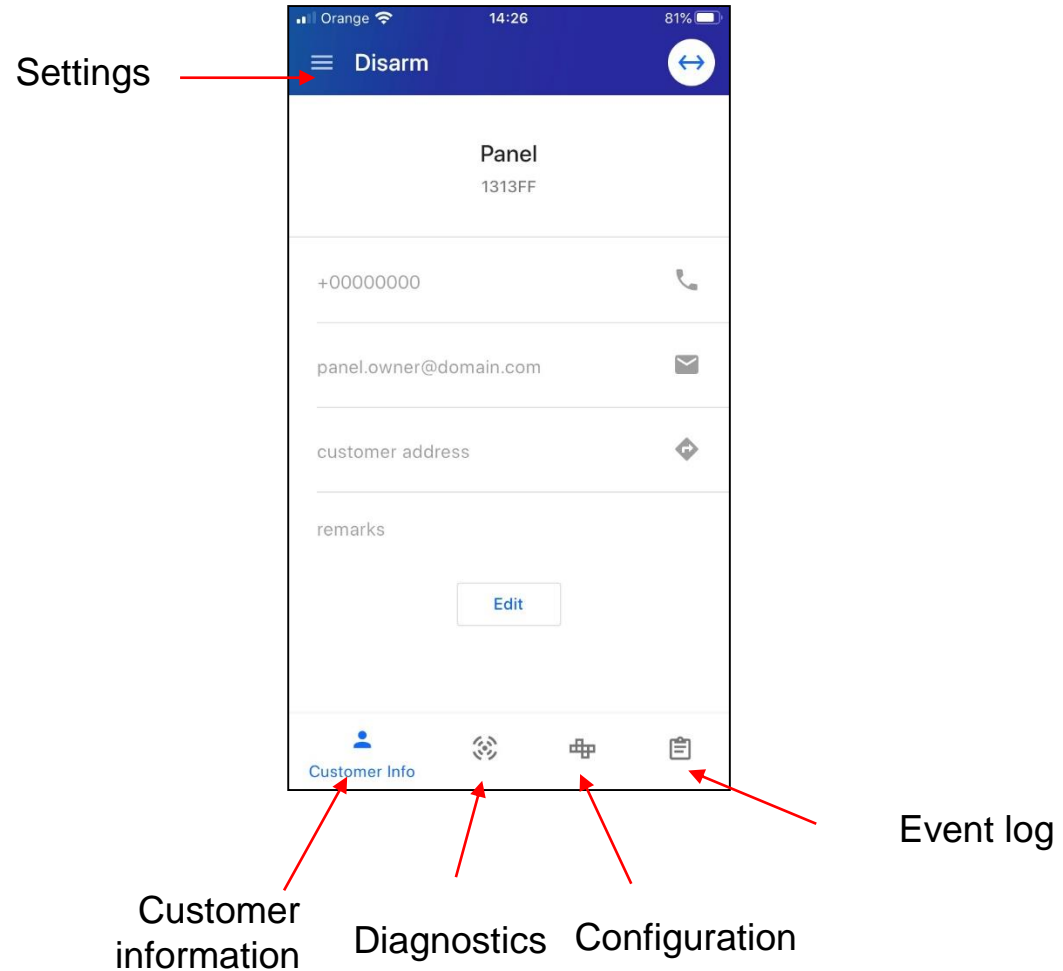
AlarmInstall – first connection

- You will be asked to provide Master Installer Code of the panel
- In case of PowerSeries Neo / PowerSeries PRO panel, adding panel for the first time and entering Master Installer Code will start the activation process
- Once the panel is activated and added, it can be remotely controlled. In case of Tyco cloud servers, for security reasons, additional end-user approval via ConnectAlarm application or its branded versions will be required



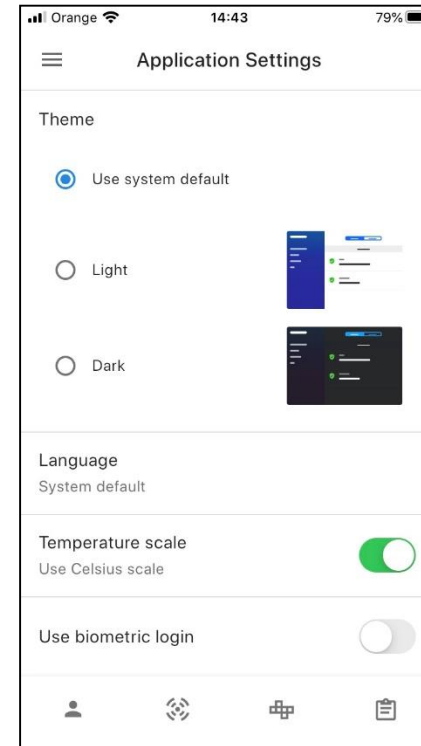
AlarmInstall – first connection

- The app consists of 5 main screens: Settings, Customer Information, Diagnostics, Configuration, Event Log



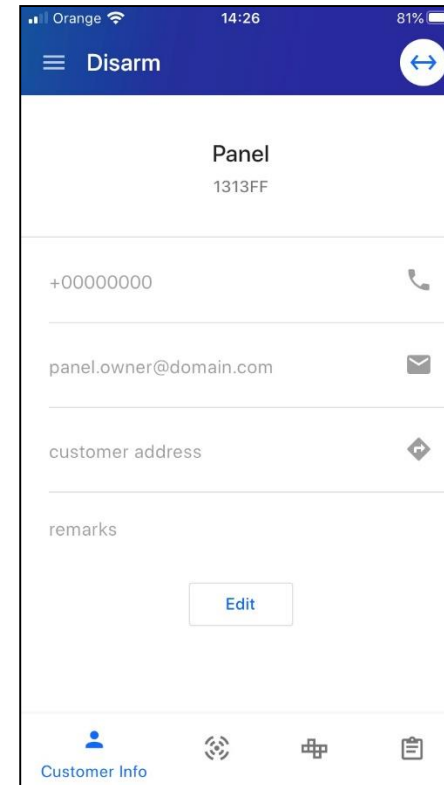
AlarmInstall – Settings

- Programmable settings are:
 - Theme (Light, Dark, System default)
 - Language (one of 24 languages)
 - Temperature display scale (Celsius / Fahrenheit)
 - Biometric login (enable / disable)



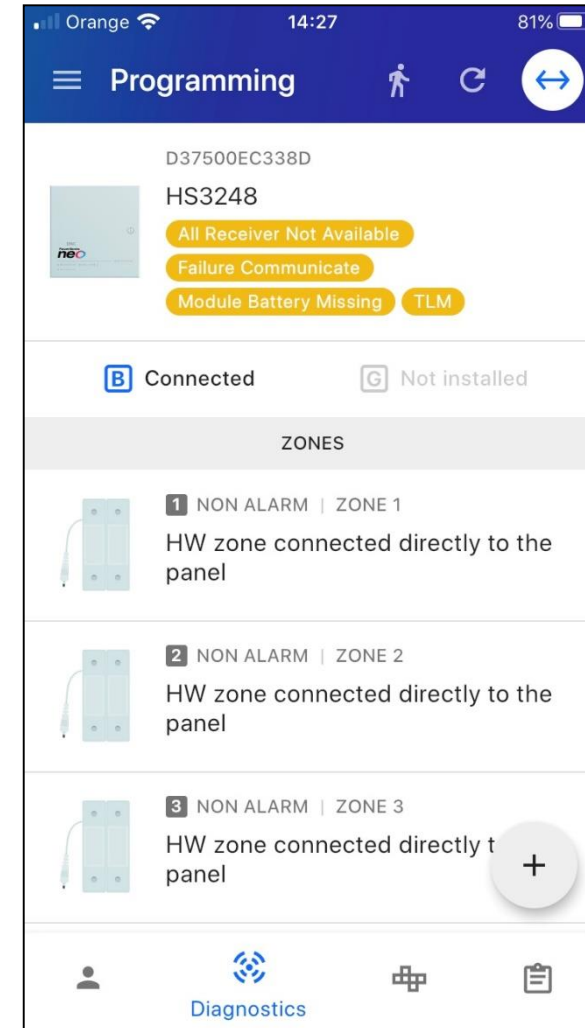
AlarmInstall – Customer info

- In the Customer Info screen you can add:
 - Customer phone number
 - Customer e-mail address
 - Customer address
 - Additional remarks



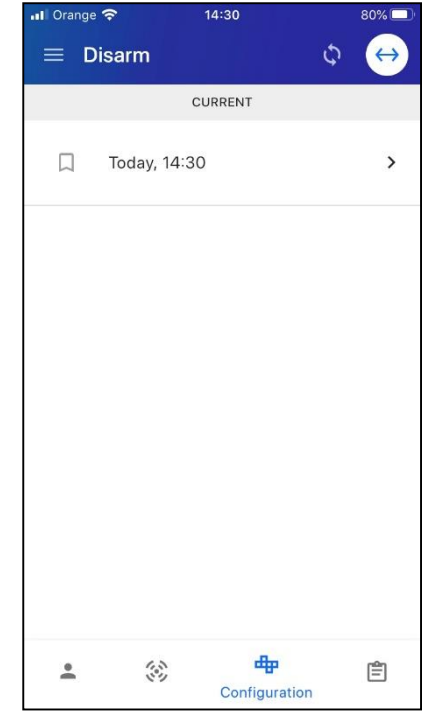
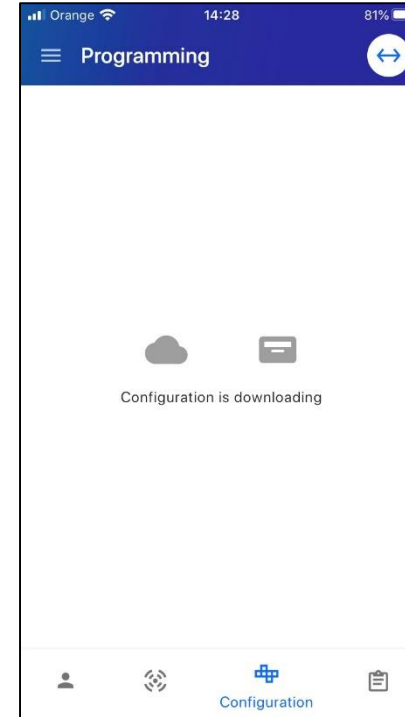
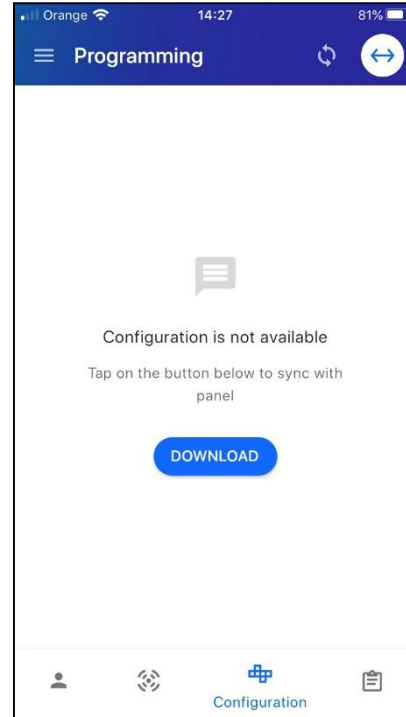
AlarmInstall – Diagnostics

- In the Diagnostic screen you can:
 - Check current system status and see active faults
 - Check connection status and communication channel
 - List zones and edit them by clicking on each one (change zone label, change zone specific configuration)
 - List all other devices and modules connected to your system and change their specific configurations and labels)
 - Enroll a wireless PowerG device to the system by pressing “+” button
 - Perform Walk Test of the system



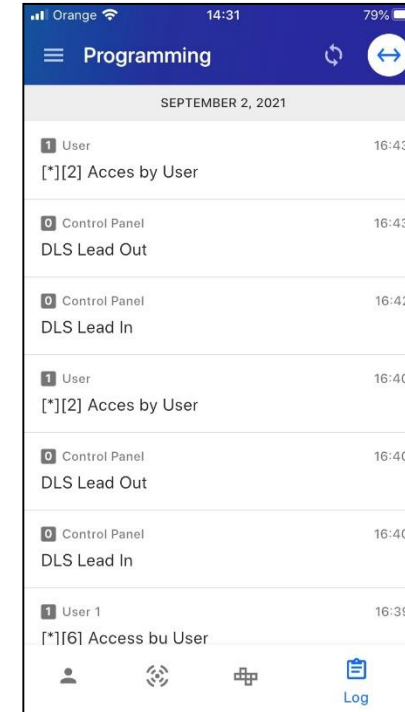
AlarmInstall – Configuration

- In the Configuration screen you can:
 - Download current panel configuration
 - Edit configuration
 - Compare between saved configurations (up to 8)



AlarmInstall – Event Log

- In the Event Log screen you can download and see current panel event log



Contact information



To learn more about the AlarmInstall app,
please visit www.dsc.com or contact your local installer/sales representative

