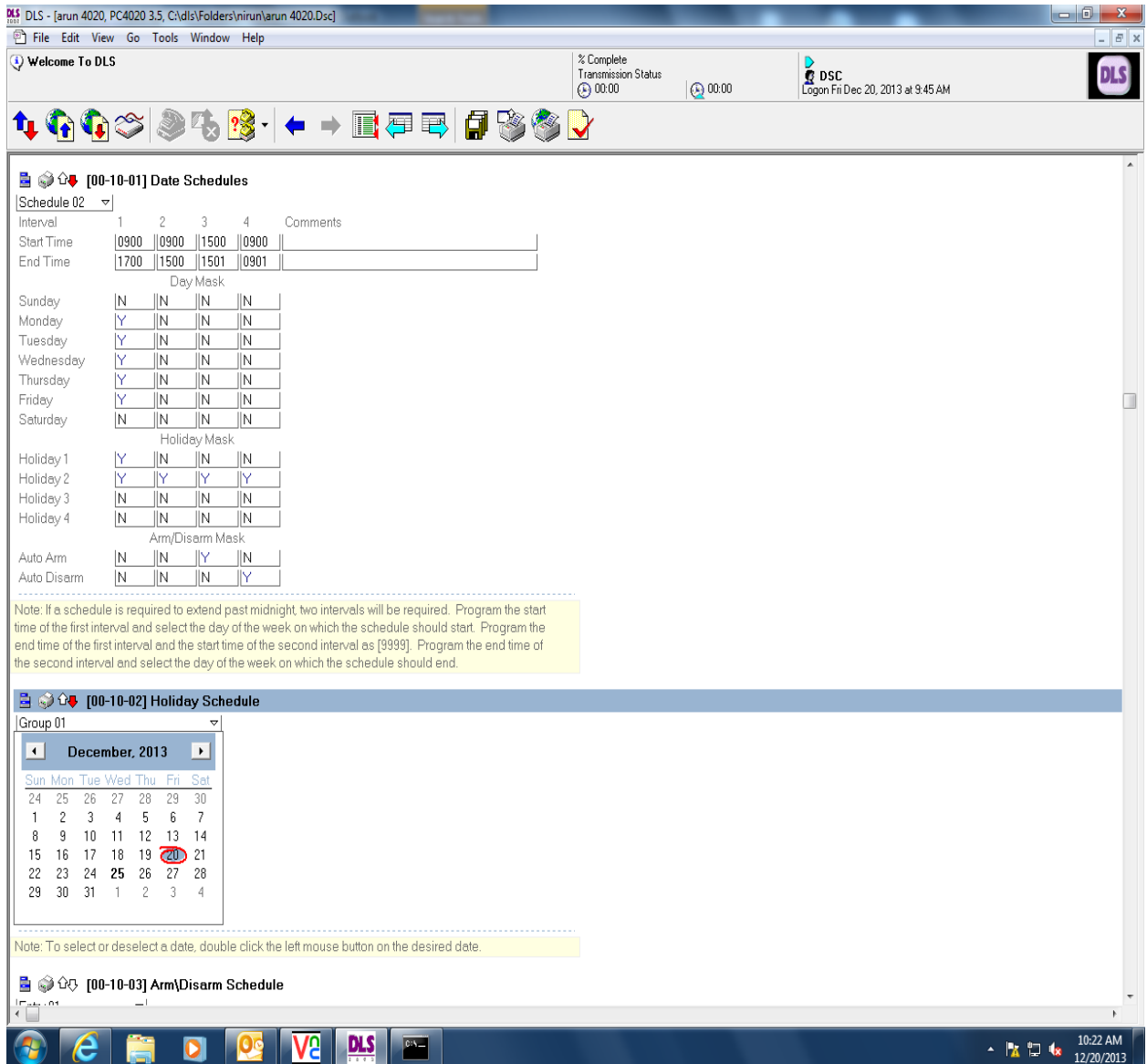


Holiday Schedule

- To setup holiday door unlock & arm / disarm schedule; please follow the steps:-

- Scenario: Schedule for full day off
- This is an example schedule; please follow your own weekday/weekend schedule.
- Regular hours of operation: Monday through Friday 0900 am- 0500 pm
- Holiday hours : December 24 and 31, 2013. 0900 am- 0300 pm
- Closed : December 25th 2013



- Scenario: Schedule for Holiday eve
- This is an example schedule; please follow your own weekday/weekend schedule.
- Regular hours of operation: Monday through Friday 0900 am- 0500 pm
- Holiday hours : December 24 and 31 2013 0900 am- 0300 pm
- Closed : December 25th 2013

DLS - [arun 4020, PC4020 3.5, C:\dls\Folders\nirun\arun 4020.Dsc]

File Edit View Go Tools Window Help

Welcome To DLS % Complete Transmission Status 00:00 DSC Logon Fri Dec 20, 2013 at 9:45 AM

[00-10-01] Date Schedules

Schedule 02

Interval	1	2	3	4	Comments
Start Time	0900	0900	1500	0900	
End Time	1700	1500	1501	0901	

Day Mask

Sunday	N	N	N	N
Monday	Y	N	N	N
Tuesday	Y	N	N	N
Wednesday	Y	N	N	N
Thursday	Y	N	N	N
Friday	Y	N	N	N
Saturday	N	N	N	N

Holiday Mask

Holiday 1	Y	N	N	N
Holiday 2	Y	Y	Y	Y
Holiday 3	N	N	N	N
Holiday 4	N	N	N	N

Arm/Disarm Mask

Auto Arm	N	N	Y	N
Auto Disarm	N	N	N	Y

Note: If a schedule is required to extend past midnight, two intervals will be required. Program the start time of the first interval and select the day of the week on which the schedule should start. Program the end time of the first interval and the start time of the second interval as [9999]. Program the end time of the second interval and select the day of the week on which the schedule should end.

[00-10-02] Holiday Schedule

Group 02

December, 2013

Sun	Mon	Tue	Wed	Thu	Fri	Sat
24	25	26	27	28	29	30
1	2	3	4	5	6	7
8	9	10	11	12	13	14
15	16	17	18	19	20	21
22	23	24	25	26	27	28
29	30	31	1	2	3	4

Note: To select or deselect a date, double click the left mouse button on the desired date.

[00-10-03] Arm/Disarm Schedule

10:35 AM 12/20/2013